

IT'S YOUR GAME

Help keep it healthy

Chronic wasting disease (CWD) is a fatal brain disease that affects white-tailed deer, moose, elk and caribou, and could severely impact Ontario's deer population if left unchecked.

So far, CWD has been found in neighbouring U.S. states and Québec, BUT NOT in Ontario wildlife.

We need your help to keep it that way!

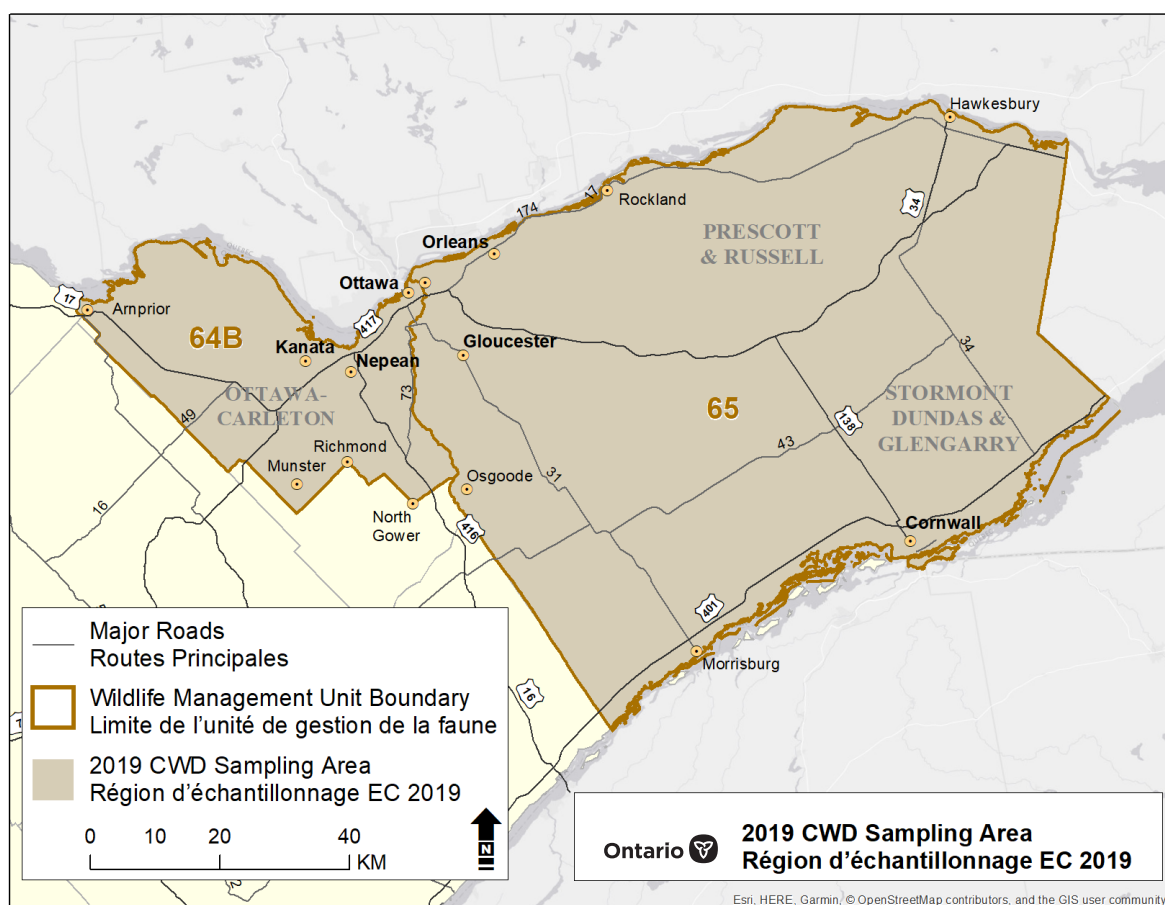


What you can do

Ministry of Natural Resources and Forestry will be testing for this disease in Wildlife Management Unit 65 and 64B from October to December 2019.

As a hunter, you can help protect the activity you enjoy and the long-term survival of these species.

1. Drop off the head of your harvested deer (yearling or older) at one of our designated freezer depots for testing.
2. Allow a wildlife technician to obtain a sample from your harvested deer.
3. Go to ontario.ca/CWD to learn more about the disease, our surveillance program, and get your sample's test results.



Drop-off depot locations

- Al's Corner Store, 4812 Highway 17, Arnprior
- Back Country Butchers, 328 Yucks Lane, Kinburn
- Boucherie Ménard, Butcher Shop, 1085 Main Street East, Hawkesbury
- Clement Meat Cutter, 1200 County Road 8, Casselman
- Fence Depot and More, 3045 Pitt Street, Cornwall
- Pronature Rockland, 2768 Laurier Street, Rockland
- South Nation Archery Supply, 11667 County Road 38, Winchester
- Vogel Fine Meat, 4547 Glen Roy Road, Unit B, Green Valley



WHAT'S IN IT FOR YOU?

Chronic Wasting Disease collectable crests for the first 500 samples provided — plus, you're helping to keep Ontario's deer population healthy.

Larissa Nituch

Ministry of Natural Resources and Forestry | 705-755-2273

For more information or to see your deer test results visit: ontario.ca/CWD