

Eastern Ontario Model Forest 2017 Annual Report



*Our vision of forests for seven generations
is a sustainable landscape valued by all communities.*

Table of Contents

Message From the President	3
The Year in Retrospect	5
❖ Forest Certification	5
❖ Forest Ecosystem Services	8
❖ Regional Forest Health Network.....	8
❖ Provincial Parks Emerald Ash Borer Assessments	9
❖ Constitutional Amendments	9
❖ Forestry Documentary: Trees, Youth, our Future.....	10
❖ Forestry Carbon Offset Project for Community Forests	10
❖ Akwesasne Partnership.....	11
❖ Education & Community Outreach.....	11
❖ Communications	12
Ross Silversides Award.....	13
The Heartwood Award.....	14
Partners & Supporters	15
2016-2017 Financial Statement	16

Message From the President

This year I received the great (and unanticipated) honour of being voted by the board of the EOMF to be president. I have had, over the years, a huge and developing affection for the EOMF and its people. In this new role I will do my best to do service to the magnificent tradition of model forest.

In reflecting on what I might write I will pay homage to the men and women, both staff and volunteers, who have made such a signal contribution to the success of this organization, through financial good times and challenging times. The list will not be complete due to both space concerns, and my own relatively recent experience with the organization.

Allow me to start with volunteers. One of the great supporters of volunteer effort is David Johnston, our former Governor General. He wrote: *“Each of you imagines a better world. That is what makes your volunteer efforts and initiatives so essential. You create a better Canada through your efforts.”*

We have had, over the years, a magnificent board of directors. Let me start with our past president, Jim McCready, for so many years doing a great job in that role and, in addition leading the Eastern Ontario Forest Health Network, an amalgamation of both volunteers and communities united in a desire to effectively deal with challenges such as the Emerald Ash Borer. Other notable mentions: Eric Boysen, Martin Streit, Sandra Lawn, Margaret George, Henry Lickers, Dave Neave, Ray and Ruth Fortune, Achille Drouin; the list is long, incomplete and illustrious.

Volunteers, supporters and partners over the years have made an incomparable contribution to the health and accomplishments of this organization.

On the staff side, there is Brian Barkley, the founding General Manager and long time leader of the model forest. And a line since then of Mark Richardson, Elizabeth Holmes (herself an early long time staff member and, while doing the General Manager job, was also completing a PhD), Wade Knight and most recently Astrid Nielsen. And then, Scott Davis and Martha Copestake initiating and growing the forest certification program, now being managed by Jim Hendry. Mary Humphries for many years was an ever cheerful administrative support person, the job now being done part time by Rhonda Roantree.

Board of Directors

Tony Bull, President
Jim McCready, Past President
Dorothy Hamilton, Vice-President
Tom Richardson, Sec.-Treasurer
Eric Boysen
Elizabeth Holmes
Geoff McVey
Jean-Claude Havard
Henry Lickers
Jeff Ward
Curtis Marcoux

Advisors to the Board

Ray Fortune
Henry Lickers, EOMF Scientist

Our model forest family is huge, and geographically grown over the years from its far eastern Ontario roots to now stretch across the width of southern Ontario. It comprises many community, conservation authority and urban forests that are FSC certified. Our private forest owner FSC participants, and most are members of the Ontario Woodlot Association situated in five chapters in eastern Ontario and, most recently, the head of the Niagara chapter. A new opportunity has been opened up due to the initiative by Astrid of the recent signing between Blue Source and the model forest for a carbon offset program for “*improved forest management*” which has the potential to generate additional revenue for community forests as they contribute to the fight against climate change.

Finally, I want to touch on our educational program. The two traditional events are the Christmas Forest Seminar and the Kemptville Winter Woodlot Conference. Both are well attended and feature different forest themes of current relevance. This past year the Christmas Seminar featured Indigenous forestry with presentations by Henry Lickers, Larry McDermott and Chris Craig. In addition to this, with a grant from the Ministry of Tourism Culture and Sport, the model forest partnered with Pine Grove productions to produce an educational series for youth on the importance of forestry in our community.

I want to close this greeting by paying homage to a “forest for 7 generations” which appears on our mast head. This reflects not only our Akwesasne partner roots but also our long time commitment to our incomparably valuable forest estate.

A handwritten signature in black ink, appearing to read 'Tony Bull', with a horizontal line underneath the name.

Tony Bull
President, Eastern Ontario Model Forest

EOMF Staff & Associates

Astrid Nielsen, RPF
General Manager

Jim Hendry, RPF, Forest
Certification Coordinator

Lorrie Brown,
Administrative Assistant

The Year in Retrospect

Another year has passed and as we reflect on our successes outlined in this year's annual report we would like to thank our many members, donors, and supporters for their continued support. Without your support we would not have been able to accomplish the initiatives described in this report.

In 2017 the Board continued to focus on ensuring the ongoing stability of the organization into the future while providing a balanced program to our members and supporters. A summary of this year's accomplishments are highlights in this report.

❖ Forest Certification

This past year marked a significant milestone for the EOMF Forest Certification Program, having now held a Forest Stewardship Council® (FSC®) Group certification (FSC® C018800) for the past 15 years. Over these years the EOMF has partnered and worked with many private forest owners, indigenous people, communities, forest industry representatives, educators, government and the public to advance sustainable forest management through certification. Sustainable forest management is about good management practices, that contributes to the social, economic and environmental health of our communities.

Our efforts are making a difference locally and contributing to the growth of forest certification across Canada. The EOMF Forest Certification Program now boast over 83,000 hectares of certified forests, represented by 14 community forest owners, 110 private forest owners, 2 commercial forest owners, 3 independent forest managers and 5 maple syrup producers (see Figure 1). Canada ranks first in certified forests at 168 million hectares. This represents over 37% of all certified forest in the world.

Each year a forest management audit is undertaken on the EOMF Forest Certification Program to verify sustainable forestry practices. This year was especially busy as two audits were required, an annual audit and a 5-year Re-assessment audit.

The annual audit took place between June 12th and 15th on several community forest and private forest properties throughout eastern and southern Ontario. The audit, conducted by Rainforest Alliance, evaluated the EOMF's systems and

Eastern Ontario Certification Working Group

Martin Streit, Co-chair
Steve Hunter, Co-chair
Brian Anderson
Nicolas Gauthier
Jean-Claude Havard
Bernard Filion
Geoff McVey
Lacey Rose
Tony Bull
Gaelen Murray
Mike Johns
Pat Piitz
Elaine Kennedy
Dorothy Hamilton
Kevin Hansen
Fred Huszarik
Pieter Leenhouts

Jim Hendry, Staff

Southwestern Ontario Certification Working Group

Curtis Marcoux, Chair
Cam Bennett
Lee Thurston
Jessie Henrich
Debbie Thain
Dave Pridham
Peter McElwain
Ron Reinholt
Jim Penner
Donna Lacey
Kevin Predon
Todd Farrell
Ryan Adams

Jim Hendry, Staff

performance against the Forest Stewardship Council® (FSC®) forest management standards and policies. The auditors found the EOMF Forest Certification Program to be in full compliance with the FSC® standards, signaling top grades!

The Re-assessment audit, conducted every 5 years, addresses all ten Principles within the FSC® Standard. The audit took place between November 27th and December 1st, 2017 on several community forest, private forest and commercial forest properties. On January 28, 2018 the EOMF was issued a forest management certificate for the next 5 years, extending until January 27, 2023. This is a clear indication of the good work the forest managers, within our Forest Certification Program, are doing to ensure their forests are well managed now and into the future. The EOMF is looking forward to working with all the forest managers over the next 5 years to strengthen and grow our commitment to sustainable forest management throughout Ontario.

The Forest Certification Program experienced significant growth in 2017. The community forest of Bruce County at 4,850 hectares joined in September and complements a growing network of certified forests across the landscape of southern Ontario under the EOMF's Forest Certification Program. New private forest owners were also added from Niagara Region and Bruce County, to name a few!

To help guide the Forest Certification Program the EOMF works closely with participating forest owners in two organized working groups, one in eastern Ontario and the other in southern Ontario. Membership in these working groups includes EOMF staff and Board members and representatives for private landowner groups, forest industry, community forest owners, and maple syrup producers.

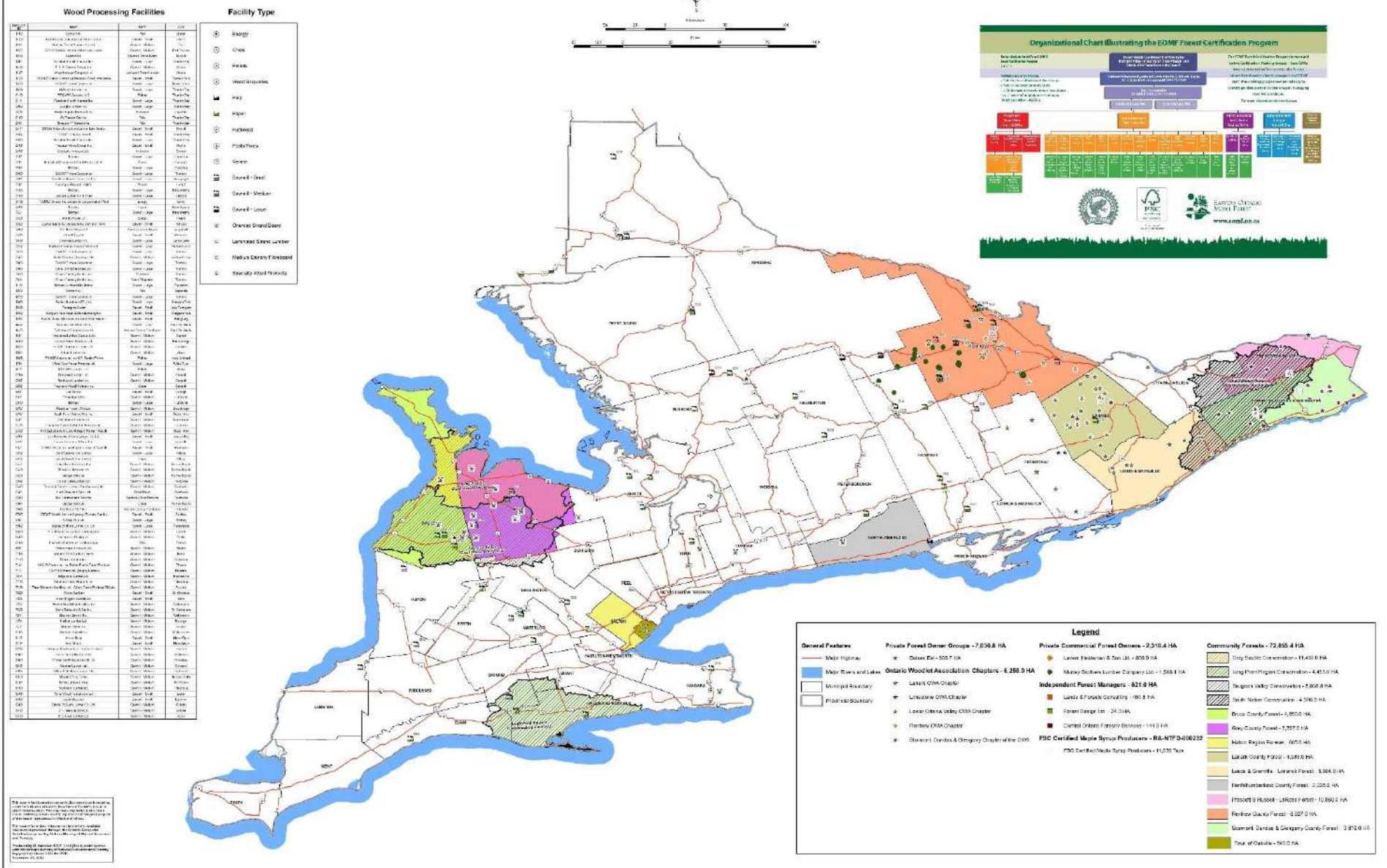


Figure 1: Map showing area certified under Eastern Ontario Model Forest Certification Program

❖ Forest Ecosystem Services

In the spring of 2017 the EOMF was selected as one of a handful of sites worldwide to participate in a pilot project by the Forest Stewardship Council® (FSC®) to evaluate the impact of forest management activities on ecosystem services (ES). Involving several of the EOMF's certified forest owners, the pilot project served as a valuable learning experience in terms of the practicalities, challenges and opportunities relative to making verifiable claims about the maintenance and enhancement of carbon and biodiversity services.

The pilot project highlighted in particular some of the challenges around selecting a baseline state against which to make ES claims, determining the nature and scope and evidence required to demonstrate the impact of management activities on the provisioning of ES, and providing sufficient rigour to support ES claims. These challenges notwithstanding, the pilot project underscored the extraordinary stewardship efforts occurring on the three certified properties involved. The EOMF will apply the learnings from this pilot project as it continues to explore opportunities for pursuing ES claims.

❖ Regional Forest Health Network

The EOMF continued to chair and facilitate efforts of the Regional Forest Health Network (RFHN) with its partners. In 2017 the RFHN continued its efforts to provide information sharing, support and expertise to municipalities, private landowners, homeowners, property owners and forest practitioners. In 2017 we reconnected with Cornell University and St. Lawrence County on the other side of the St. Lawrence River. This was important to share information on such insects as the Emerald Ash Borer and Hemlock Woolly Adelgid.

Here are a few of the RFHN activities that were undertaken by the Network and its partners:

1. June 14, 2017- **Dr Krista Ryall & Gene Jones** held a workshop at the Baxter Conservation Area on the Release of parasitic wasps for biological control of Emerald Ash Borer in Canada. This workshop was well attended.
2. August 16, 2017 - **Isabelle Aubin** Research Scientist with Canadian Forest Service held a workshop in Ottawa on the

Members of the Regional Forest Health Network

Agence regionale de mise en valeur des prives outaouaises
Agriculture and Agri-Food Canada (Arboretum)
Canada Food Inspection Agency
Canadian Forest Service (SS Marie, Ottawa)
City of Cornwall
City of Gatineau
City of Ottawa
Conservation Authorities (5-Eastern Region)
Cornell University, NY
County of Renfrew
Ministry of Natural Resources & Forestry (Kemptville & Pembroke Districts, Southern Region)
National Capital Commission
Mohawk Council of Akwesasne
Ontario Invasive Plant Council
Ontario Parks
St Lawrence County, NY
St. Lawrence Islands National Park
Town of Carleton Place
Tree Canada
United Counties of Leeds & Grenville

effects of Emerald Ash Borer on Woodlots. This workshop was well attended.

3. October 10-11, 2017- **Ontario Invasive Plant Council** held its Invasive Plant Conference and Annual General Meeting in Ottawa.
4. October 24, 2017- **41st Annual Provincial Forest Health Review** was held in Orillia with some of our members attending.
5. November 15, 2017 – **Vanessa Chaimbrone**- Terrestrial Monitoring Technician-Forest Health Ministry of Natural Resources & Forestry held the Eastern Region Annual Forest Health Review as many of the partners cannot make it to Orillia. This event was well attended as usual.
6. November 15, 2017- **The Regional Forest Health Network** held its meeting following the Pest Review.

In 2018 we will work more closely with Canadian Food Inspection Agency, Cornell University and St. Lawrence County NY keeping vigilant for the following species:

- Asian Long-horned Beetle
- Hemlock Woolly Adelgid
- Oak Wilt
- Spotted Lanternfly, just to name a few.

❖ Provincial Parks Emerald Ash Borer Assessments

This year, the EOMF assisted staff in planning for Emerald Ash Borer management at the following provincial parks: Charleston Lake; Silver and Sharbot Lakes; Rideau River; and Murphy's Point Provincial Parks. These reports will help guide the park staff on how to deal with the invasive pest as it moves through their respective areas.

❖ Constitutional Amendments

The Constitution of the Eastern Ontario Forest Group (aka the Eastern Ontario Model Forest) forms the basis of what the EOMF does, and how it works. It was initially adopted at the inaugural meeting in 1992 and has only received minor updates since then. There is a need to not only modify this Constitution and By-Laws to reflect current programs and practices, but to also enable future opportunities.

At the last Annual General Meeting held on June 23rd, 2017, there was a resolution from the floor prepared by board member, Eric Boysen, that read:

“Be it resolved that the Staff and the Board of the Eastern Ontario Model Forest be directed to undertake a strategic, legal and policy review of the role, mandate, programs and other initiatives to address current and future challenges, and to remain strong into the future. They will report back to members in a Special meeting (consider using electronic methods) to review and adopt any changes to Constitution and By-law. Time is of the essence.”

This resolution was carried unanimously, and the board worked hard over the last year to review all aspects of the constitution and make it more relevant for the EOMF as we know it today. At this year’s AGM in Fournier on June 13th, 2018, members will be asked to vote on significant changes to our Constitution and By-laws.

❖ **Forestry Documentary: Trees, Youth, our Future**

In 2016, the EOMF partnered with Pinegrove Productions, a filming studio based out of Almonte, to develop a three-part documentary on forest stewardship in Eastern Ontario. Funding for this project was made possible through the **Ontario150 Partnership Program** and thirteen partners across the region. The project, titled *Trees, Youth, Our Future*, was completed in the spring of 2018 and tells the story of forest stewardship in eastern Ontario – yesterday, today and tomorrow. It can be viewed on Youtube (via eomf.on.ca) or by contacting the EOMF for DVDs.

The next steps for this project is to have it viewed by as many youths across Ontario as possible. This will be achieved through working with partners to help spread the word and contacting organizations responsible for developing curricula. A social media platform will also be developed to help get the message out.

In addition to the Ontario150 Partnership Program, funding for this project has been provided by the following EOMF partners: Algonquin Forestry Authority, Canadian Institute of Forestry, Forests Ontario, Forest Products Association of Canada, Lavern Heideman & Sons, Lanark County Stewardship Council, Mazinaw-Lanark Forest Inc., Ontario Ministry of Natural Resources and Forestry, Ontario Woodlot Association, Ottawa Valley Forest Inc., Renfrew Stewardship Council and Shaw Lumber.

❖ **Forestry Carbon Offset Project for Community Forests**

This year, the EOMF partnered with Bluesource Canada to develop a program to generate carbon offsets for community forests that are part of the EOMF Certification Program. The new partnership with Bluesource Canada, a leading developer

of forest carbon and other Greenhouse Gas (GHG) offsets, supports EOMF's vision to promote sustainable forest management practices on private forest lands across Ontario. Aside from reducing GHG emissions through a long-term commitment of sustainable forest management, the development of carbon offsets will also result in a host of other ecosystem service benefits such as clean drinking water, wildlife habitat, and recreation. These benefits will be realized while maintaining a vibrant forest economy by continuing to provide the local mills with a supply of certified wood.

In the partnership, EOMF and Bluesource Canada will provide guidance to those community forests that are interested in pursuing the opportunity. They will also provide a framework for the development of forest carbon offset projects that generates economies of scale. Through the aggregation of multiple community forests, this framework will reduce project costs such as inventory and verification, allowing more money to be re-invested back into the forest.

❖ **Akwesasne Partnership**

As a founding partner to the EOMF, the Mohawk community of Akwesasne has shaped the very essence of our governance structure and the way in which we work with partners – embracing Naturalized Knowledge Systems principles and the Great Way of Peace (respect, equity, and empowerment as key ingredients for effective and lasting partnerships). Nurturing this partnership and friendship is something the EOMF values highly and it is central to the objective of continuing to develop enduring partnerships that enable the organization to flourish in the long-term.

❖ **Education & Community Outreach**

Kemptville Winter Woodlot Conference

The 31st edition of the Kemptville Winter Woodlot Conference was held on February 21st, 2018 at the North Grenville Municipal Complex. This year's event attracted some 200 participants. This informal conference has become an important annual educational and networking event for private woodlot owners, farmers, rural landowners, and community forest managers in eastern Ontario.

Kemptville Winter Woodlot Conference Committee

Elizabeth Holmes, Chair
Cheyene Brunet
Scott Danford
Achille Drouin
Dorothy Hamilton
Pieter Leenhouts
Geoff McVey
Jeff Ward
Astrid Nielsen, Staff

This year's keynote speaker was Warren Mabee, Director of the Institute for Energy and Environmental Policy at Queen's University. Warren spoke about the role of woodlots in supporting Ontario's environmental strategies. Other topics included: must-see forests in eastern Ontario; ruffed grouse biology and habitat; emerald ash borer and the release of several species of parasitic wasps as a bio-control mechanism; and, program updates from various organizations and agencies. New to the conference this year was an expanded (and, by all accounts, popular) 'Ask an Expert' feature.

Christmas Forest Seminar

In partnership with the Ottawa Valley Section of the Canadian Institute of Forestry, the EOMF hosted another successful annual Christmas Forest Seminar. Themed around Indigenous forestry in eastern Ontario, this year's event drew a record number of participants.

Feature presentations included: the importance (imperative) of Indigenous engagement in forestry; current issues in forestry from an Indigenous perspective; Indigenous forestry and partnerships; and, the challenges and opportunities associated with incorporating Indigenous content into the curriculum.

❖ Communications

Our monthly electronic e-letter continues to provide our members, partners, supporters and friends of the EOMF with an array of news and information on current forest topics and issues both nationally and internationally. To subscribe to the e-letter send us your contact information to modelforest@eomf.on.ca.

The EOMF website www.eomf.on.ca continues to be an effective means for the EOMF to disseminate information out to a broad audience seeking information on managing our natural resources.

Members are welcome to attend EOMF Board meetings. A schedule of upcoming Board meetings is posted on the EOMF website under Board Meeting Schedule and minutes of the meetings are available to all members at the EOMF office.

Ross Silversides Award

Honourary Members & Recipients of the Ross Silversides Forestry Award

Honourary members and recipients of the Ross Silversides Forestry Award are identified by the Board of Directors for their outstanding contribution to forestry in eastern Ontario or as past or present residents who have made a major contribution to forestry elsewhere in the world.

1993	C. Ross Silversides, Maitland, Ontario (Honourary)
1994	Bess Silversides, Maitland, Ontario (Honourary)
1994	Ernest M. Kaientaronkwen Benedict, Akwesasne
1995	Teharonianeken, Chief Jake Swamp, Akwesasne
1996	Ewan Caldwell, Rockcliffe Park, Ontario
1996	Ferdinand LaRose, Bourget, Ontario
1996	Françoise LaBelle, St. Bruno Quebec (Honourary)
1998	Sandra S. Lawn, Prescott, Ontario
1999	William K. "Old Bill" Fullerton, Manotick, Ontario
2000	Jim Cayford, Barrhaven, Ontario
2001	George Fowler, Iroquois, Ontario
2001	Henry Atsienhanonne Arquette, Akwesasne
2002	John Kerr-Wilson, Ompah, Ontario
2003	Ray & Ruth Fortune, Almonte, Ontario
2004	Wayne D. Young, Cornwall, Ontario
2005	Peter M. Murray, Gananoque, Ontario
2006	F. Henry Lickers, Akwesasne
2007	Edwin H. White, Marcellus, New York
2007	Brian A. Barkley, Elma, Ontario
2008	Richard David, Akwesasne
2009	Dave Chapeskie, Spencerville, Ontario
2010	Dave Neave, Nepean, Ontario
2011	William (Bill) Hall, Renfrew, Ontario
2012	Jim Hendry, South Stormont, Ontario
2012	Martin Streit, Morrisburg, Ontario
2013	Jim McCready, Carleton Place, Ontario
2014	Laird Nelson, Codrington, Ontario
2015	Eric Boysen, Maberly, Ontario
2015	Cathy Nielsen, Peterborough, Ontario
2016	Margaret George, Akwesasne
2017	Wade Knight, Ashton, Ontario
2017	Tom Richardson, Perth, Ontario

The Heartwood Award

Recipients of the Heartwood Award include:

The Heartwood Award is presented in recognition of an individual or group who has made an exceptional volunteer contribution to the Eastern Ontario Model Forest.

2005

Sally Hamilton, Kemptville, Ontario

2006

John P. Wilson, Kemptville, Ontario

2007

Tony Bull, Ottawa, Ontario

2008

Alf Campbell, Kemptville, Ontario

2008

Jim Gilmour, Watson's Corners, Ontario

2009

Hans Ottens, Maberly, Ontario

2010

Achille Drouin, Casselman, Ontario

2011

Don Schell, Tatlock, Ontario

2012

Kerry Coleman, Oxford Mills, Ontario

2013

J. Peter Hall, Gloucester, Ontario

2014

Dorothy Hamilton, Cornwall, Ontario

2015

Pieter Leenhouts, Kars, Ontario

2016

Fred Huszarik, Almonte, Ontario

2017

Jean-Claude Havard, Plantagenet, Ontario

Partners & Supporters

Agriculture and Agri-Food Canada
Algonquin First Nation of Golden Lake
Bluesource Canada
Boisés Est
Canadian Food Inspection Agency Canadian
Canadian Institute of Forestry
Catarauqui River Conservation Authority
City of Ottawa
Conservation Ontario
County of Lanark
Ferguson Tree Nursery
Forest Gene Conservation Association
Forest Stewardship Council of Canada
Forests Ontario
Fortune Farms
Friends of Limerick Forest
Frontenac Arch Biosphere Reserve
Grey County Forest
Herb Shaw & Sons Ltd.
International Model Forest Network
ITS - International Truck Load Services Inc.
Lands & Forests Consulting
Lanark & District Maple Syrup Producer's
Association
Lavern Heideman & Sons Ltd
Leeds-Grenville Stewardship Council
Long Point Conservation Authority
Limerick Forest
Lower Ottawa Valley Chapter of the OWA
Mazinaw-Lanark Forest Inc.
McCann's Forest Products
McCready Tree & Forestry Consulting
Mississippi Valley Conservation Authority
Mohawk Council of Akwesasne, Environment
Program
Murray Brothers Lumber
National Capital Commission
Natural Resources Canada Norampac Inc.,
Trenton Division
North Grenville Chamber of Commerce
Northumberland County Forest
Ontario Maple Syrup Producers' Association
Ontario Ministry of Natural Resources &
Forestry
Ontario Professional Foresters Association

Ontario Woodlot Association
Ontario Woodlot Association, LOV Chapter
Ontario Woodlot Association, SD&G Chapter
Ontario Woodlot Association, Lanark Chapter
Ontario Woodlot Association, Renfrew Chapter
Ottawa Stewardship Council
Ottawa Valley Section - Canadian Institute of
Forestry
Ottawa Valley Forest Sustainable Forest Licence
Queen's University
Rainforest Alliance
Raisin Region Conservation Authority
Renfrew County
Rideau Valley Conservation Authority
St. Lawrence Islands National Park
Sand Road Maple Farm
Sandra S. Lawn & Associates Inc.
Saugeen Valley Conservation Authority
South Nation Conservation Authority
State University of New York, College of
Environmental Science and Forestry
Stewardship Council of Lanark County
TD Graham + Associates
Town of Carleton Place
Town of Oakville
Tree Canada Foundation
United Counties of Leeds and Grenville
United Counties of Prescott and Russell
United Counties of Stormont, Dundas &
Glengarry
Westwind Forest Stewardship Inc.

*Our vision of forests for seven generation
is a sustainable landscape valued by all communities.*

Acknowledgement

The Eastern Ontario Model Forest gratefully acknowledges the support we have received from our many members, supporters and partners. With your support it has allowed the Eastern Ontario Model Forest to continue its work to champion sustainable forests and healthy, vibrant forest communities.

Eastern Ontario Model Forest
10-3 Campus Drive
Kemptville, ON K0G 1J0
Tel: 613-258-6587
E-mail: modelforest@eomf.on.ca
Website: www.eomf.on.ca

2017-2018 Financial Statement