

Understanding Log and Lumber Quality and Measurement



EASTERN ONTARIO FORÊT MODÈLE
MODEL FOREST DE L'EST DE L'ONTARIO

An Overview...

Module 1 – Introduction

Module 2 – Logs (under development)

Module 3 – Lumber (under development)

Module 1 - Introduction

- Project description
- Major lumber species
- What is a log
- What is a board
- How is 'quality' assessed

Module 1 - Introduction

- The Course-in-a-Box Project



Module 1 - Introduction

For more information...

- Local stewardship coordinator
- EOMF
- Web (coming sometime...)



Module 1 - Introduction



About this workshop...

1. Want to provide a better understanding what happens after the trees are harvested
2. Give information on how you can maximize value
3. Give information on issues that affect value

Module 1 - Introduction



Tree Species

Ontario's trees include about...

- 20 – 30 are deciduous
- 10 – 15 are coniferous



Not all of these are 'lumber' species

Module 1 - Introduction

Major Lumber Species...



Hard Maple

Red Oak



White Pine

Red Pine

Module 1 - Introduction

Secondary Lumber Species...



Yellow & Wht. Birch

Soft Maple

Cherry, Ash

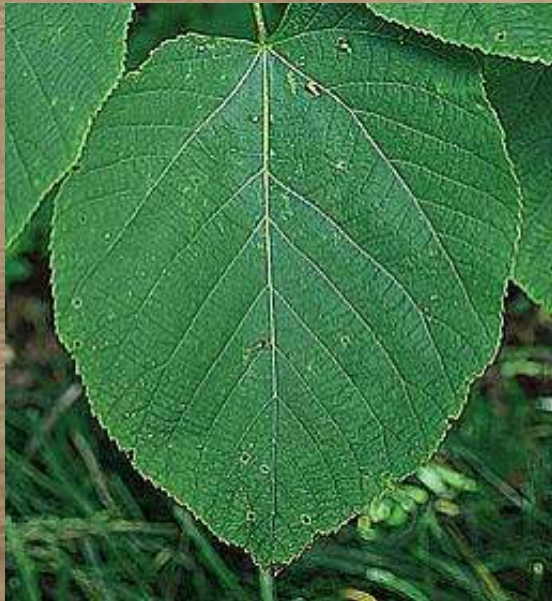


Cedar

Spruce

Module 1 - Introduction

Non-marketable Lumber Species...



Poplar

Elm

Basswood



Hemlock

Tamarack/Larch

Module 1 - Introduction

Lost species...



- Once the biggest hardwood in the forest
- Whipped out by a fungus imported from Asia
- Now exists as an understory shrub

Module 1 - Introduction



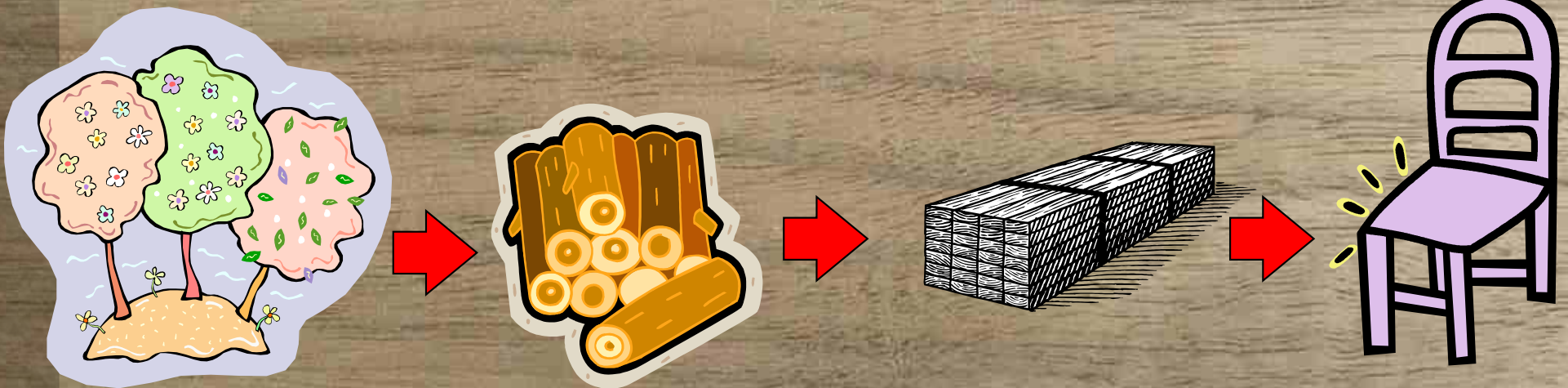
Soon-to-Be Lost species...

- Once the biggest hardwood in the forest
- Whipped out by a fungus imported from Asia
- Now exists as an understory shrub
- Background image is BN

Module 1 - Introduction

From Trees to Logs to Lumber to Furniture...

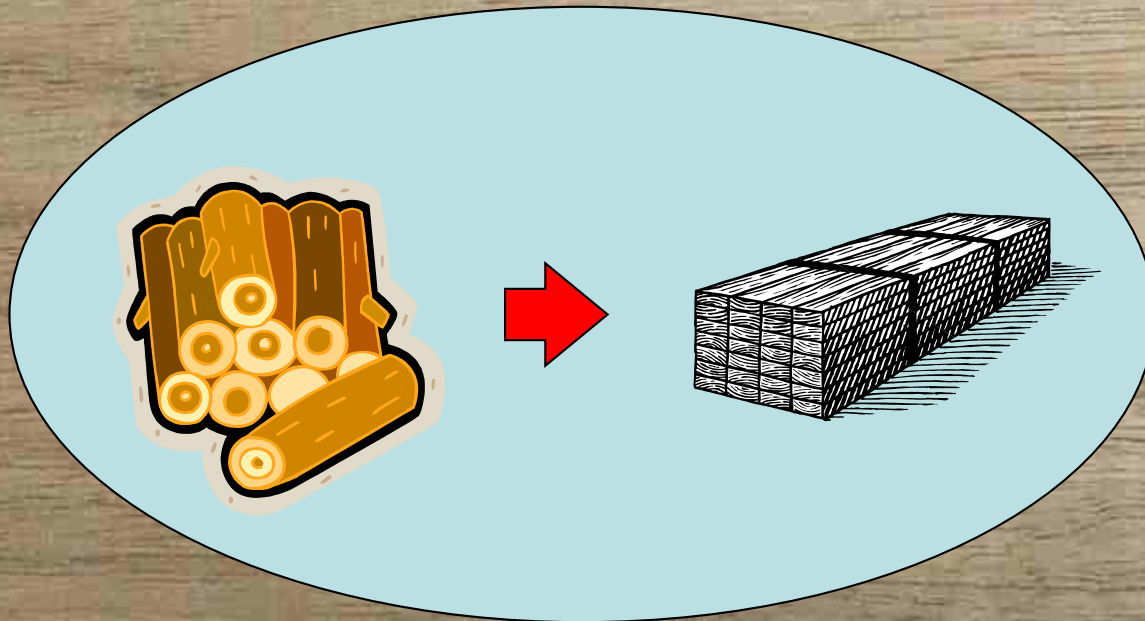
- Lots can go wrong
- Opportunities to maximize value
- Each one has a different value



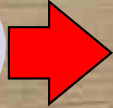
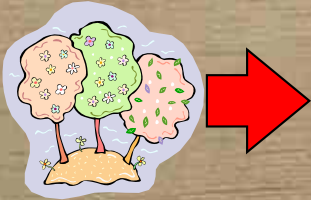
Module 1 - Introduction

From Trees to Logs to Lumber to Furniture...

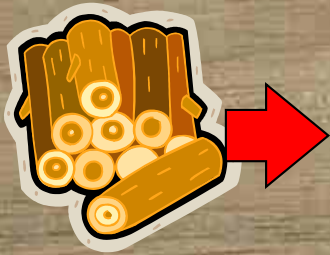
- Mostly concerned about these two steps
- Goal is to maximize value



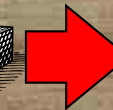
Module 1 - Introduction



$\$X$



$\$X+Y$



$\$X+Y+Z$



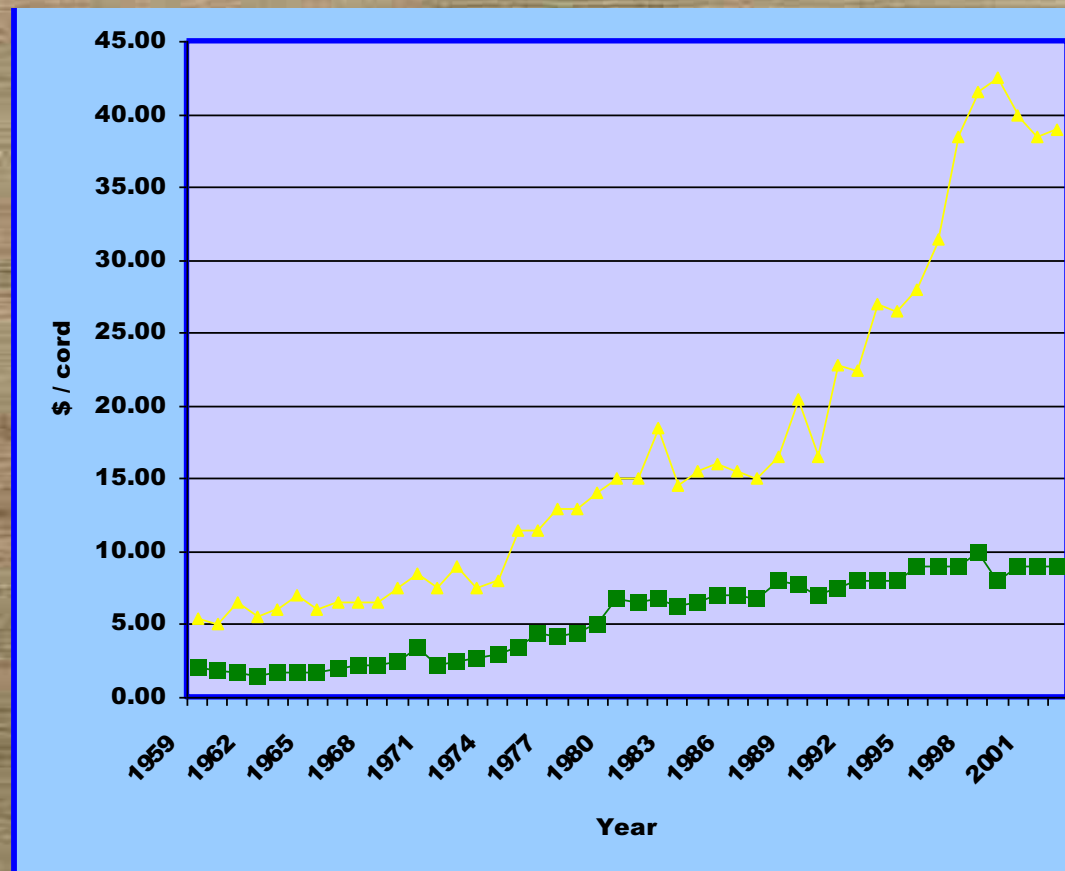
$\$???$

Lets talk about value...

- Each one pays differently
 - No effective way to compare
- Value is 'all over the map'
- Do your research

Module 1 - Introduction

Lets talk about value... • Fluctuates over time



Module 1 - Introduction

Lets talk about value... • Fluctuates by species

Species

#1 Common (mfbm)

Red Oak and

\$600-700

Sugar Maple

Soft Maple, Ash,

\$400-500

Basswood

Beech, Poplar

\$300-350

Module 1 - Introduction

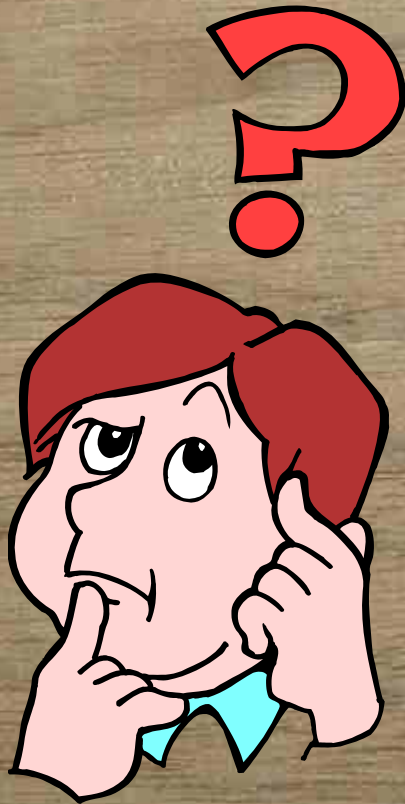
Lets talk about value... • Fluctuates by grade

Ash logs (\$/1000bf)

Veneer Quality	\$325
#1 Sawlogs	\$240
Pulpwood/ Firewood	\$110
#3 Sawlogs	\$ 90

Module 1 - Introduction

Lets talk about value...



- Fluctuates by grade
- Fluctuates by species
- Fluctuates by year
- Affected by location
- Affected by who is managing
- Affected by who is cutting

Module 1 - Introduction



What is a log...

- Not a standing tree
- Tree contains logs
- # depends on
 - tree height
 - height to crown
 - Where the defects are

Module 1 - Introduction

What is a log...



- Has volume
- Has a small end
- Has a large end
- Has a length
- May be defect free, may not
- Has value

Module 1 - Introduction



What is a board...

- Has volume
- Has dimensions
- May be defect free, may not
- Has value

Module 1 - Introduction

Questions ?