



Christie Belcourt



# Indigenous Cultural Values in our Woodlots



**EOMF Presentation 2021**

**Ethan Huner**

**Natural and Cultural Resource Strategist**



**Algonquins of Ontario  
Consultation Office**

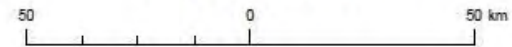






# Algonquins of Ontario Settlement Area Boundary

September 2012



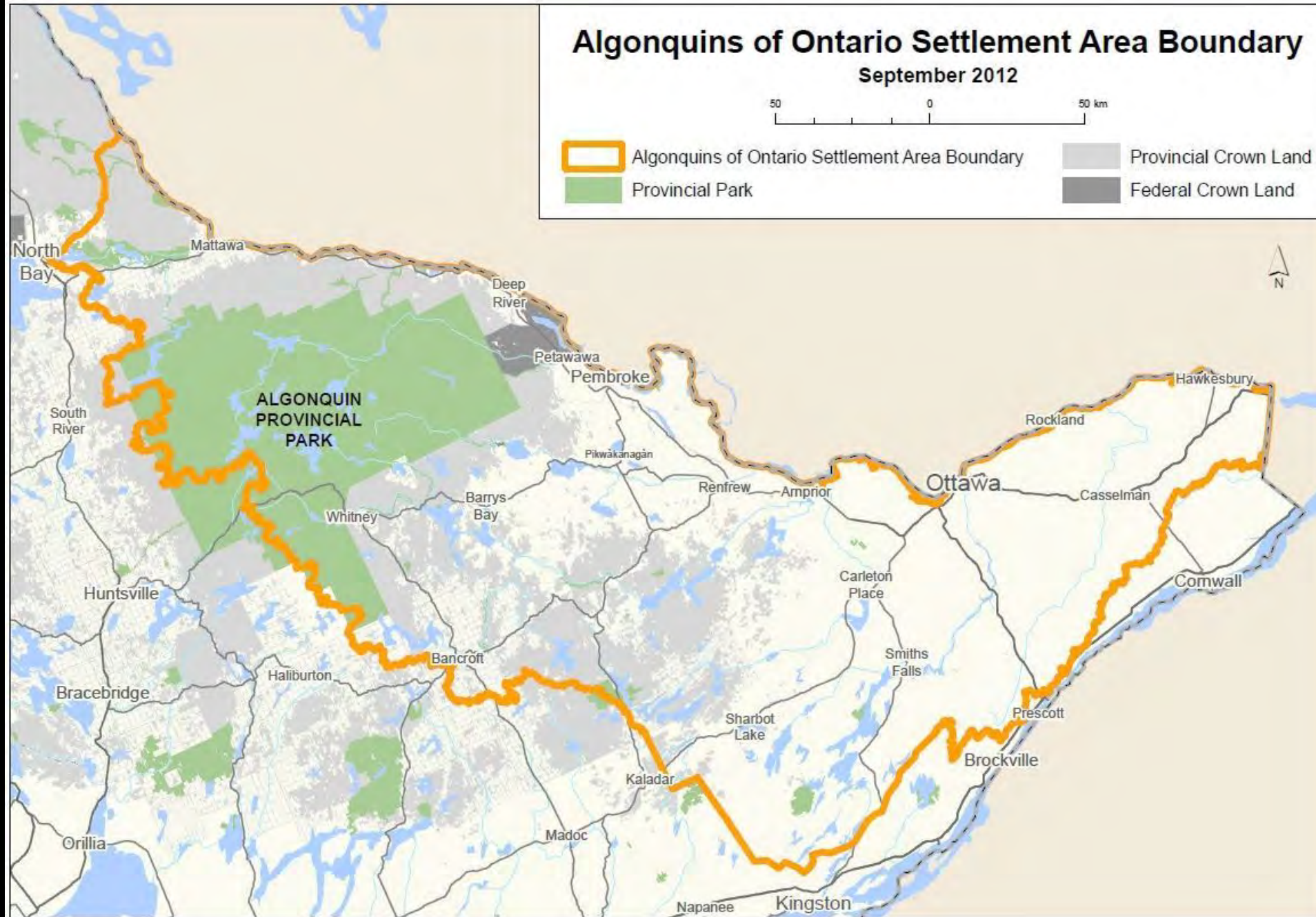
Algonquins of Ontario Settlement Area Boundary

Provincial Park



Provincial Crown Land

Federal Crown Land









# Presentation: 45min – 50min + Questions

- **What are Indigenous Cultural Values?**
- **General Indigenous land-use history spanning millennia:  
Eastern Ontario**
- **Examples of Indigenous Values that may found in your  
woodlot (and how to treat them)**
- **Increasing your archeological awareness in your woodlot**
- **Questions**



# What are Indigenous Cultural Values?





# A “Place Marker” or “Wayfinding Point”





# Culturally Modified Trees (CMTs)





A medicinal plant, or the habitat where it grows





# Historical Indigenous Camp locations for /Hunting/Fishing/Trapping























# Ontario Archaeological Society Arch Notes

New Series Volume 20 Issue 1

ISSN 0048-1742

January/February 2015



Deer hunter Jaime MacDonald finds evidence of an earlier hunter in the Bancroft area—9,000 years before.

## OAS News

3. President's Message

4. Our newest members of the Board ...In their own words

7. Draft Minutes of the 2015 Annual Business Meeting

## Articles

5. St. Charles or Dovetail Points in Eastern Ontario

Visit us on the Web at [www.ontarioarchaeology.on.ca](http://www.ontarioarchaeology.on.ca)



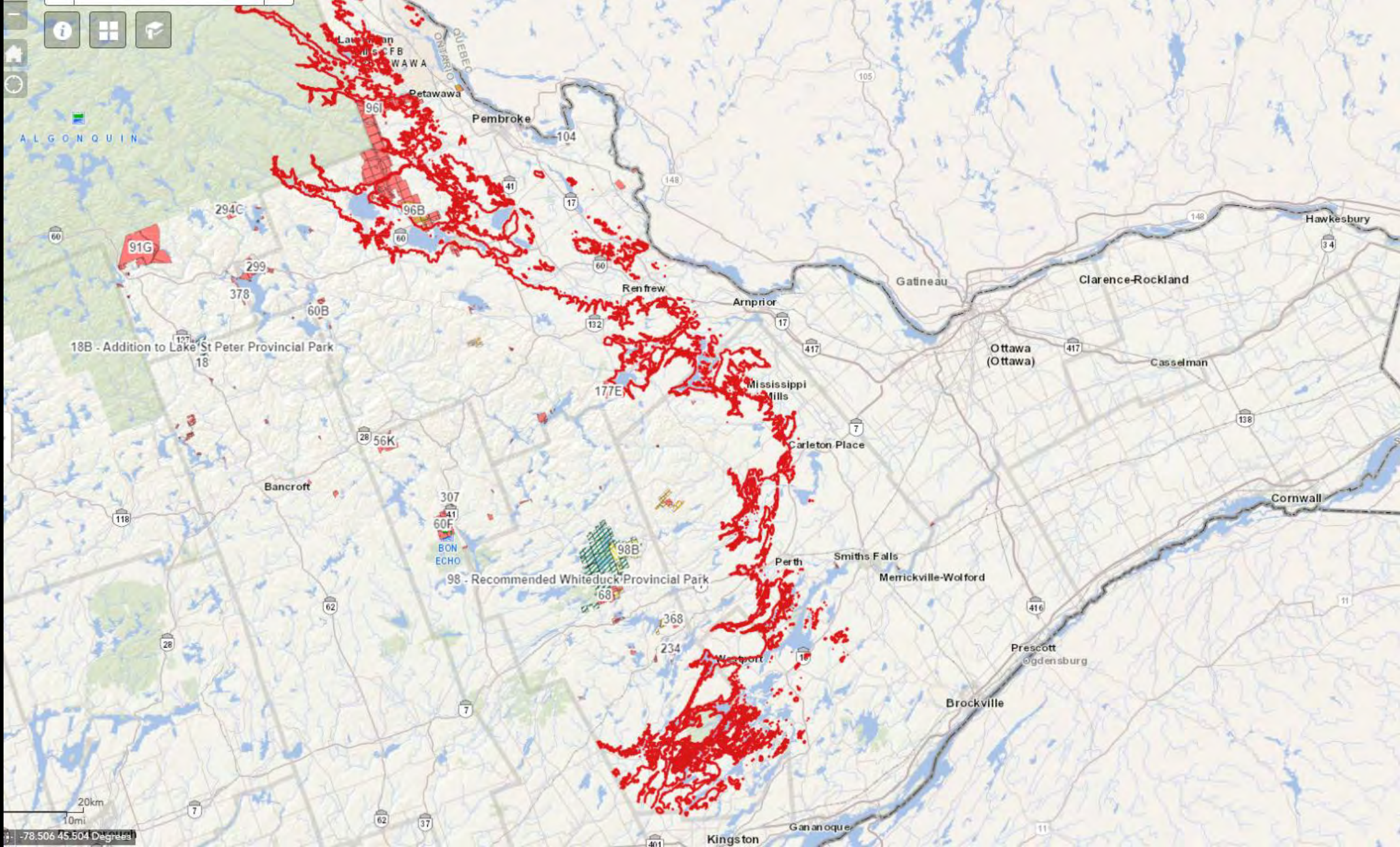
FIGURE 3

Palaeo-Indian projectile points of the Rideau Lakes. a: Fluted point (ROM C-4627059); b: Side-notched fluted point (ROM C-47891.62); c: Obverse of b (note the unifacial side notches); d: Side-notched lanceolate Plano point of the Inderwick Collection, Perth Museum (note the unifacial side notches); e: lanceolate Plano point of the Innisville Museum; f: Large bifacial blade or spearhead from the Mason Site (B/Ga-22).























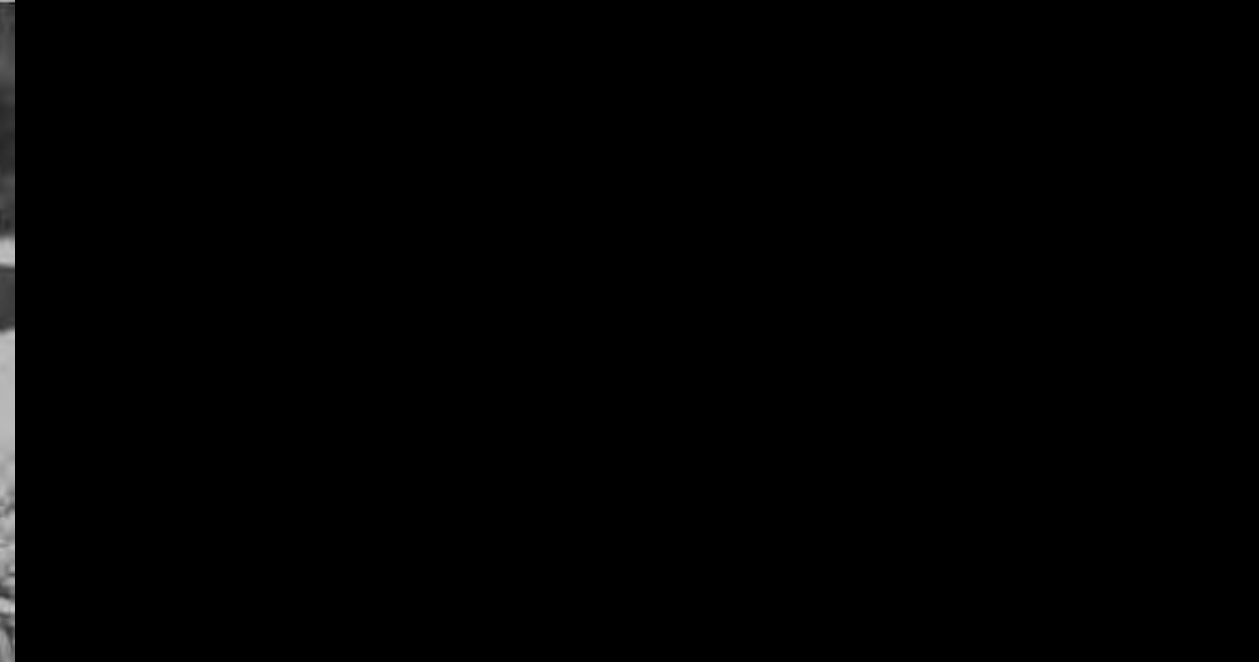




Modern water levels and drainage established approx.  
5000 – 6000 years ago





































Indigenous Values can be anywhere in our forests







# Stone Features of Cultural Value











































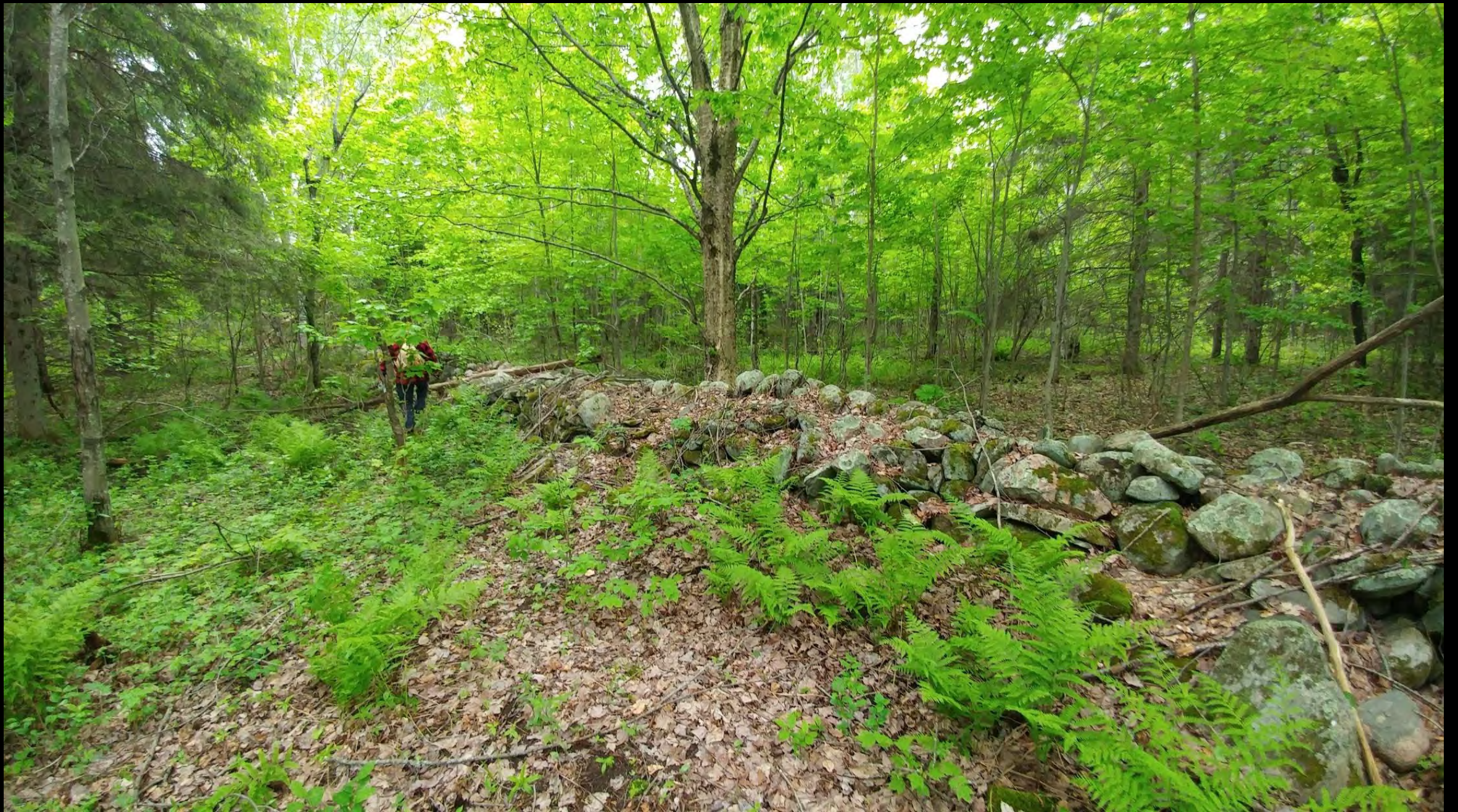




















## White birch – Canoe Bark

- Straight bole for 12-20ft
- Relatively few branch scars
- 36" DHB
- Bark 1/2cm thick
- Bark is not shaggy









































## White Cedar— Canoe Wood

- Straight bole for 12-20ft
- Relatively few branch knots
- 18" + DHB
- Trunk not twisting (straight grained)















# Cultural Modifications to Trees – Human Scars









# Sugarbush Camps













Bad Asswood

Basswood















Poplar – For a basket or Bath









# Black Ash Swamp – For the Basket Makers





# Balsam Fir – Sticky messy goodness



- Burns
- Wounds
- Muscle Pain
- Colds
- Bronchitis
- Asthma

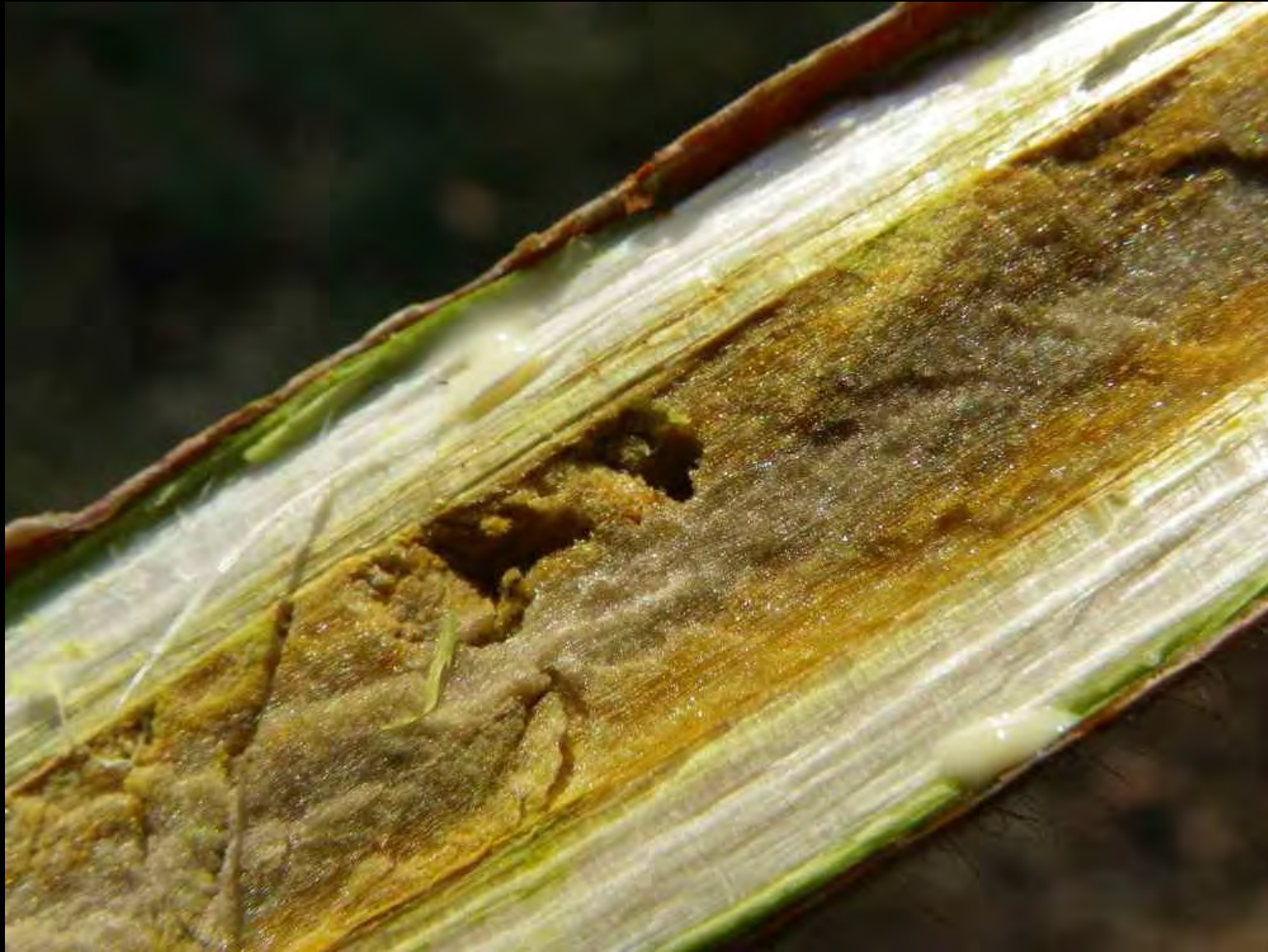


# Staghorn Sumac – Indigenous Lemonade





Soft spongy pith – hollowed out for whistles and spigots

















# Spruce Pitch – Gum, Glue, Salve, Wounds





# Indian Cucumber







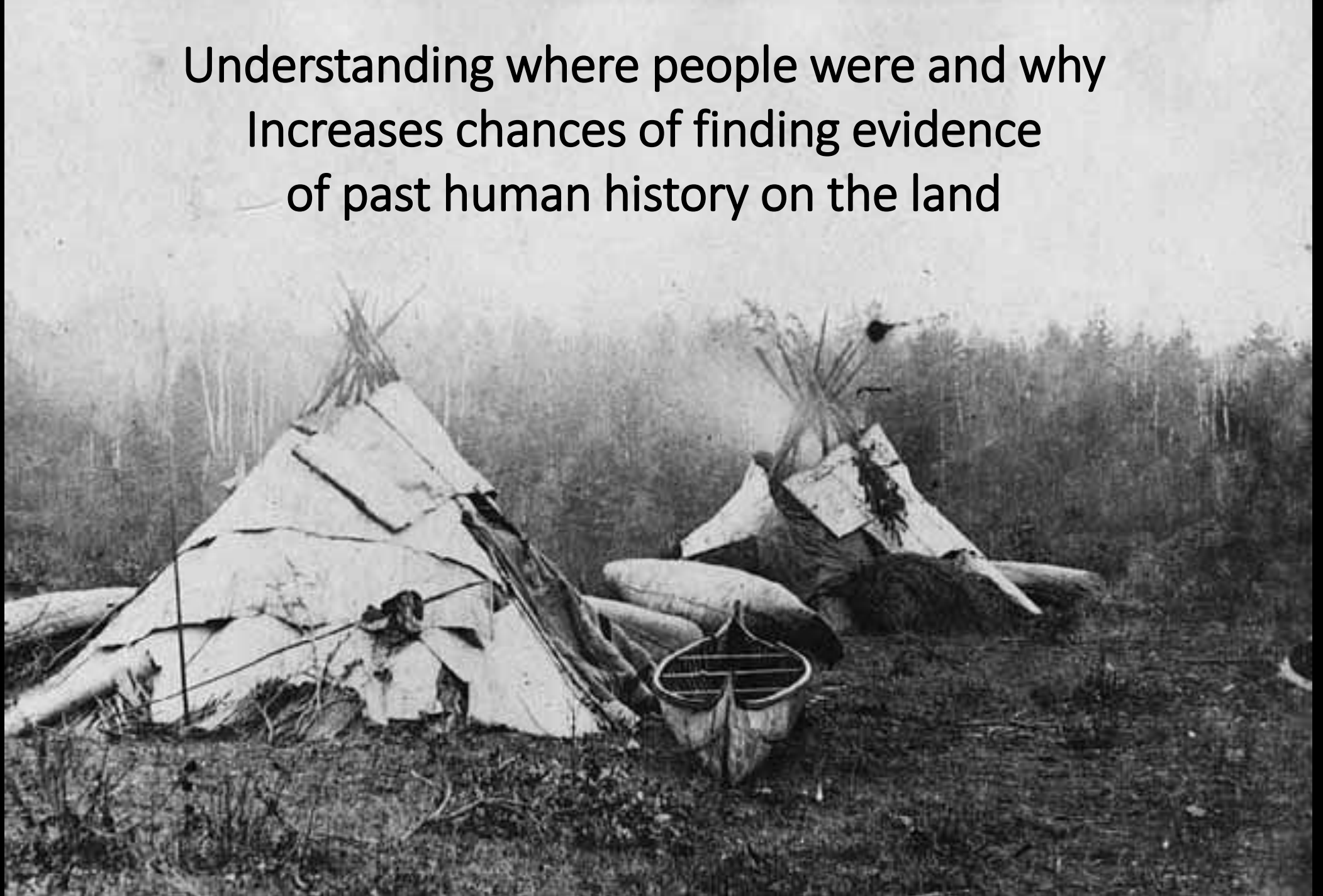


An aerial photograph of a vast, rolling forest landscape. The terrain is covered in dense green trees, with some areas showing lighter green, possibly indicating different tree species or early autumn colors. In the distance, a small lake is visible, surrounded by more forested hills. The sky is clear and blue. The text "Values can be Anywhere!" is overlaid in white, bold, sans-serif font in the center of the image.

Values can be Anywhere!



Understanding where people were and why  
Increases chances of finding evidence  
of past human history on the land








- Proximity to Shoreline and Beaches  
Southern Aspect, Prolonged Daylight



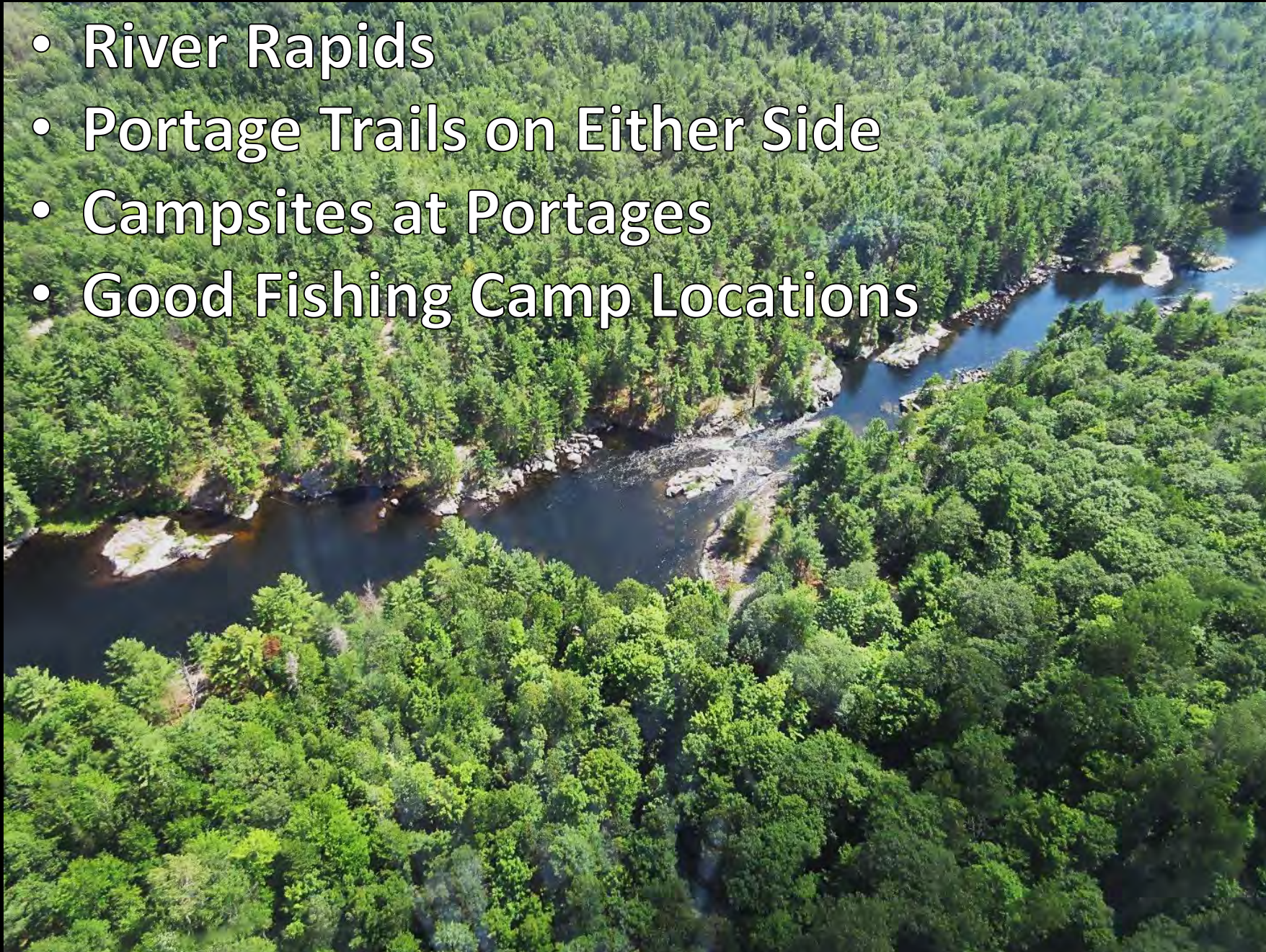
- 
- A photograph of a campsite in a forest. In the foreground, a fire burns brightly in a pile of logs on the ground. To the left, a large tree trunk is visible. In the background, a calm lake reflects the sky, with green hills and mountains visible on the far shore under a cloudy sky.
- Good Long-distance Vistas,
  - Close to Waterbody/ Travel Routes
  - Level, Well- Drained Soils



- 
- An aerial photograph of a river system winding through a dense, green forest. The river features several islands and narrow channels (narrows). The water is a deep blue, and the surrounding forest is a vibrant green. The perspective is from a high angle, looking down at the river and its tributaries.
- Narrows for Wildlife Crossing/ Travel Corridors
  - Good Fishing Locations



- River Rapids
- Portage Trails on Either Side
- Campsites at Portages
- Good Fishing Camp Locations





- 
- Oak Forests with Southern Exposure
  - Old Beaches/ Ancient Waterbodies
  - Good Wildlife Areas
  - Good Harvesting Areas



# “Ancient Shorelines”

















# Stone tool manufacturing sites or “Workshops”

















































# Questions?



Christie Belcourt