



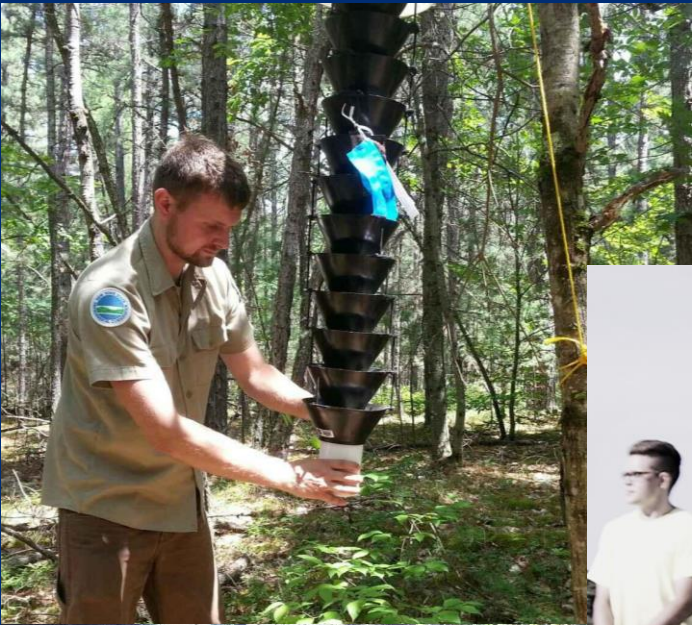
**Department of  
Environmental  
Conservation**

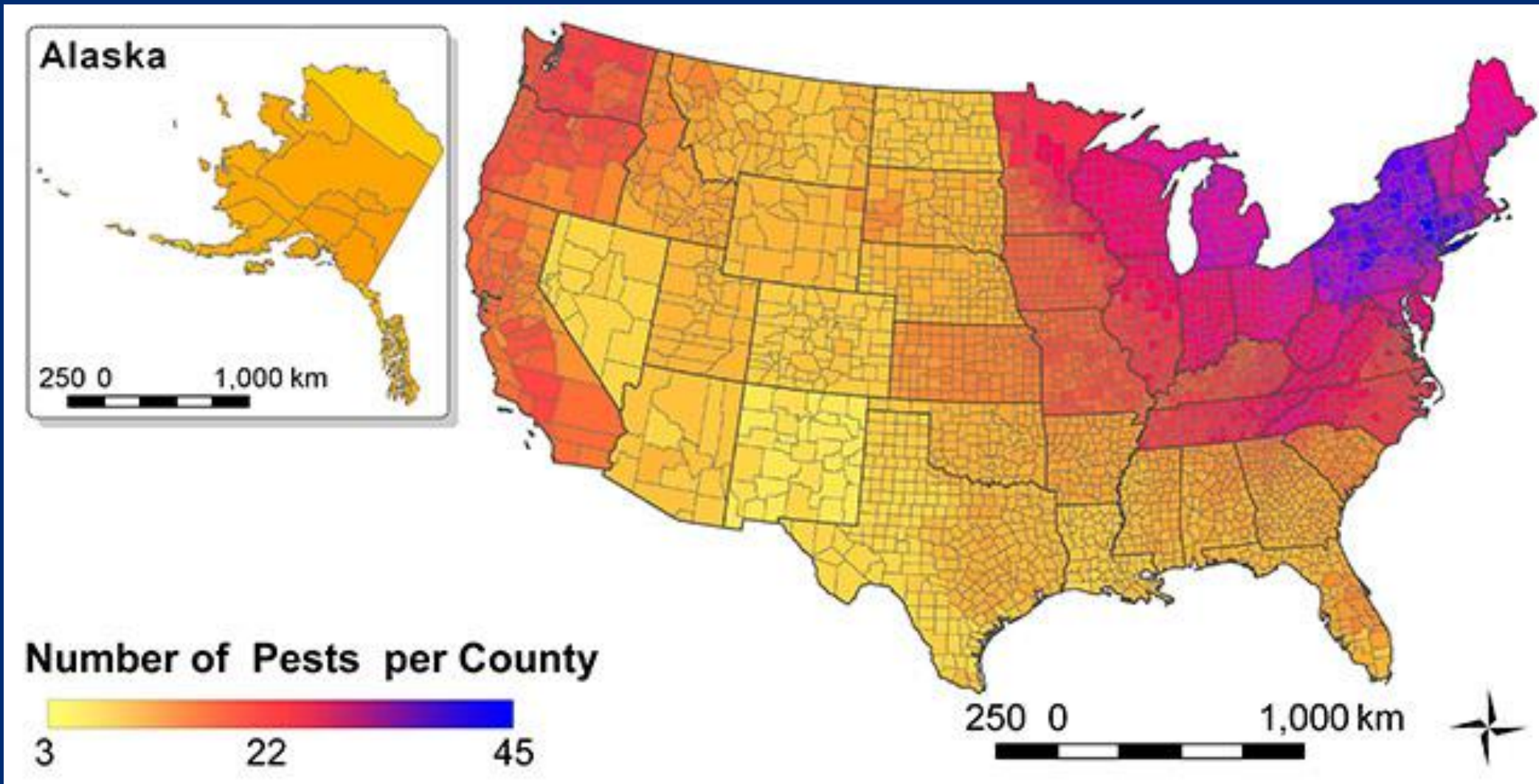
# Oak Wilt

## Emerging Invasive Forest Pests Workshop

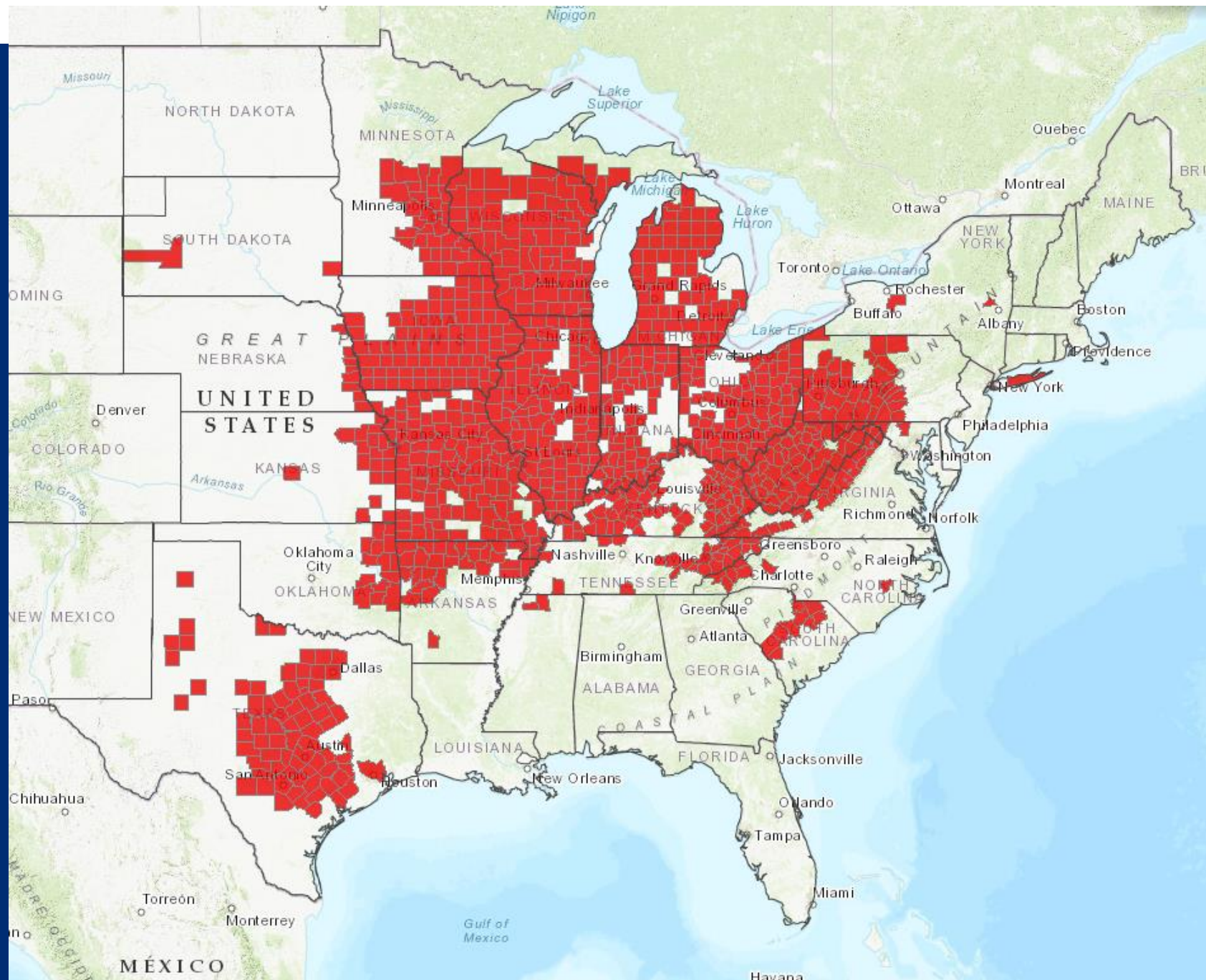
**Kelsey McLaughlin, DEC Oak Wilt Program**

**January 16, 2019**

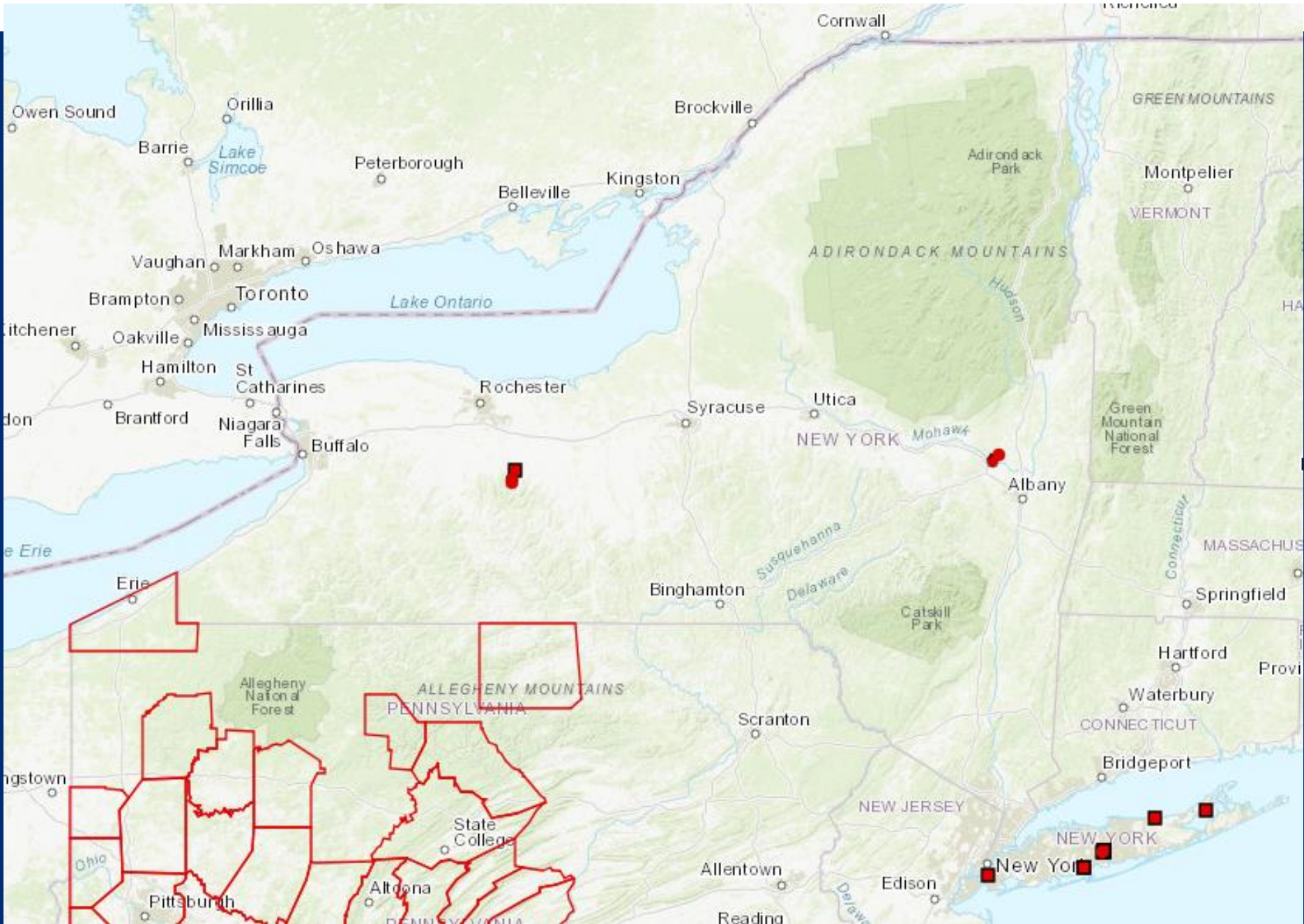




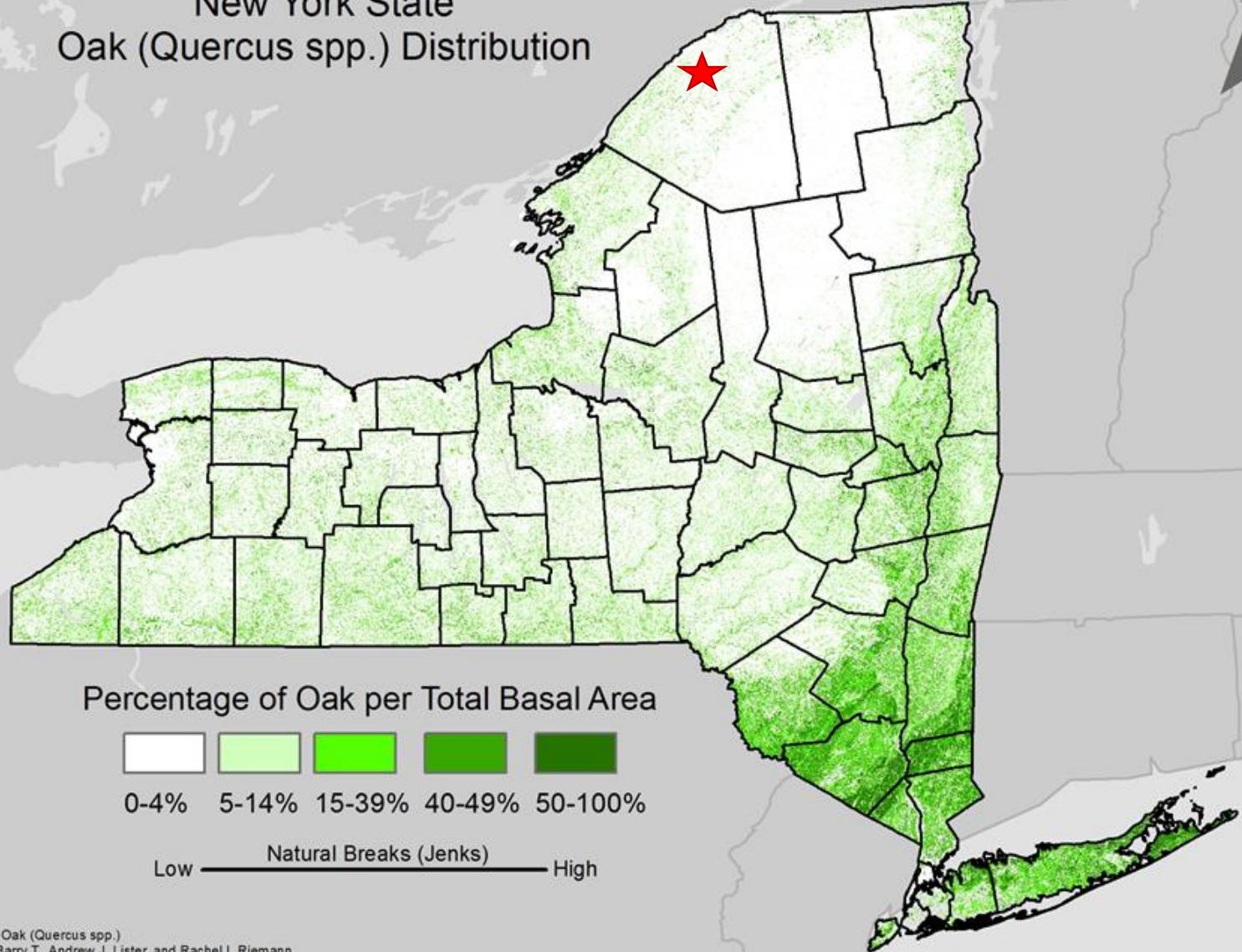
Liebholt et al. 2013



Forest Health Technology and Enterprise Team, Forest Pest Conditions 2017

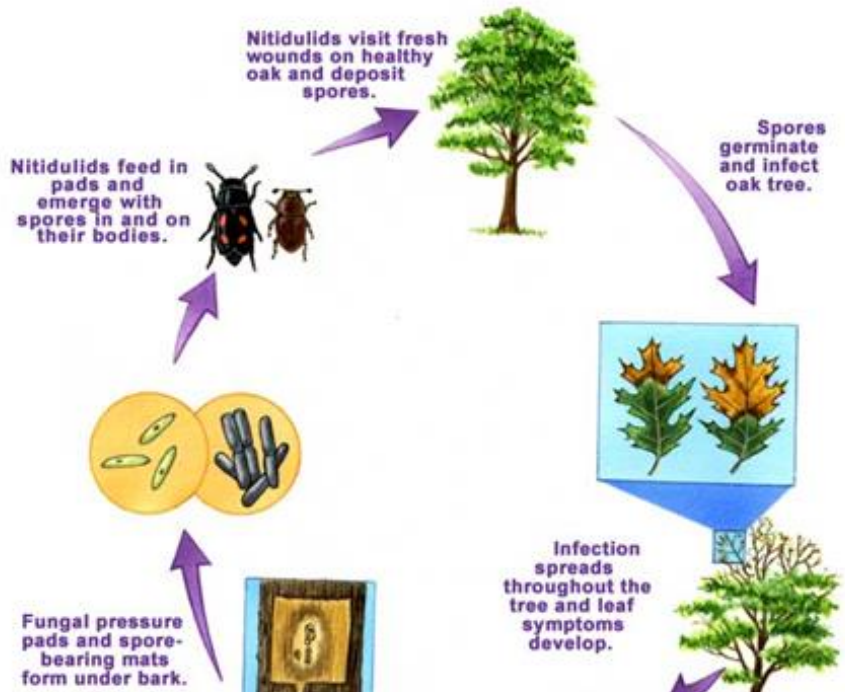


# New York State Oak (Quercus spp.) Distribution

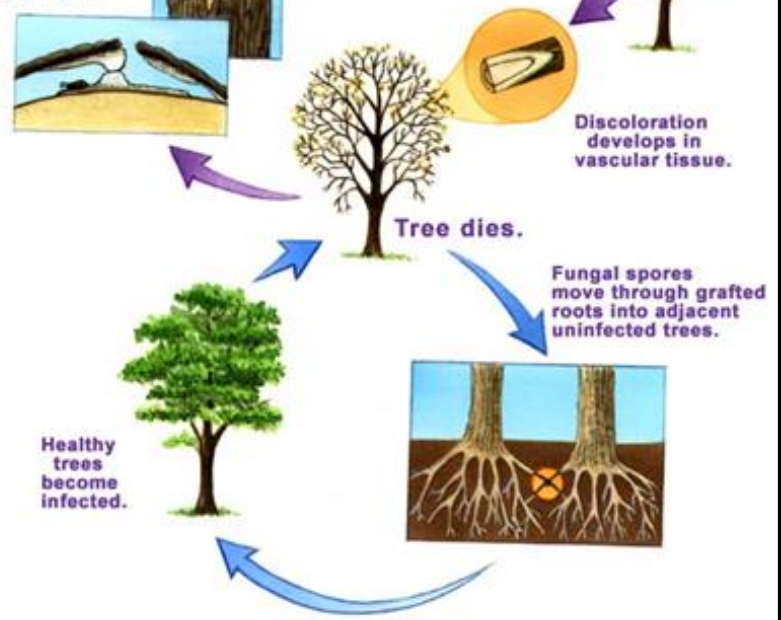


Dataset: Oak (Quercus spp.)  
Wilson, Barry T., Andrew J. Lister, and Rachel I. Riemann  
A nearest-neighbor imputation approach to mapping  
tree species over large areas using forest inventory plots  
and moderate resolution raster data.  
Forest Ecology and Management 2012

Overland Spread (Initiation of new infection centers)



Root Graft Spread (Expansion of infection centers)



Karl Higgin 2011, Bugguide.com



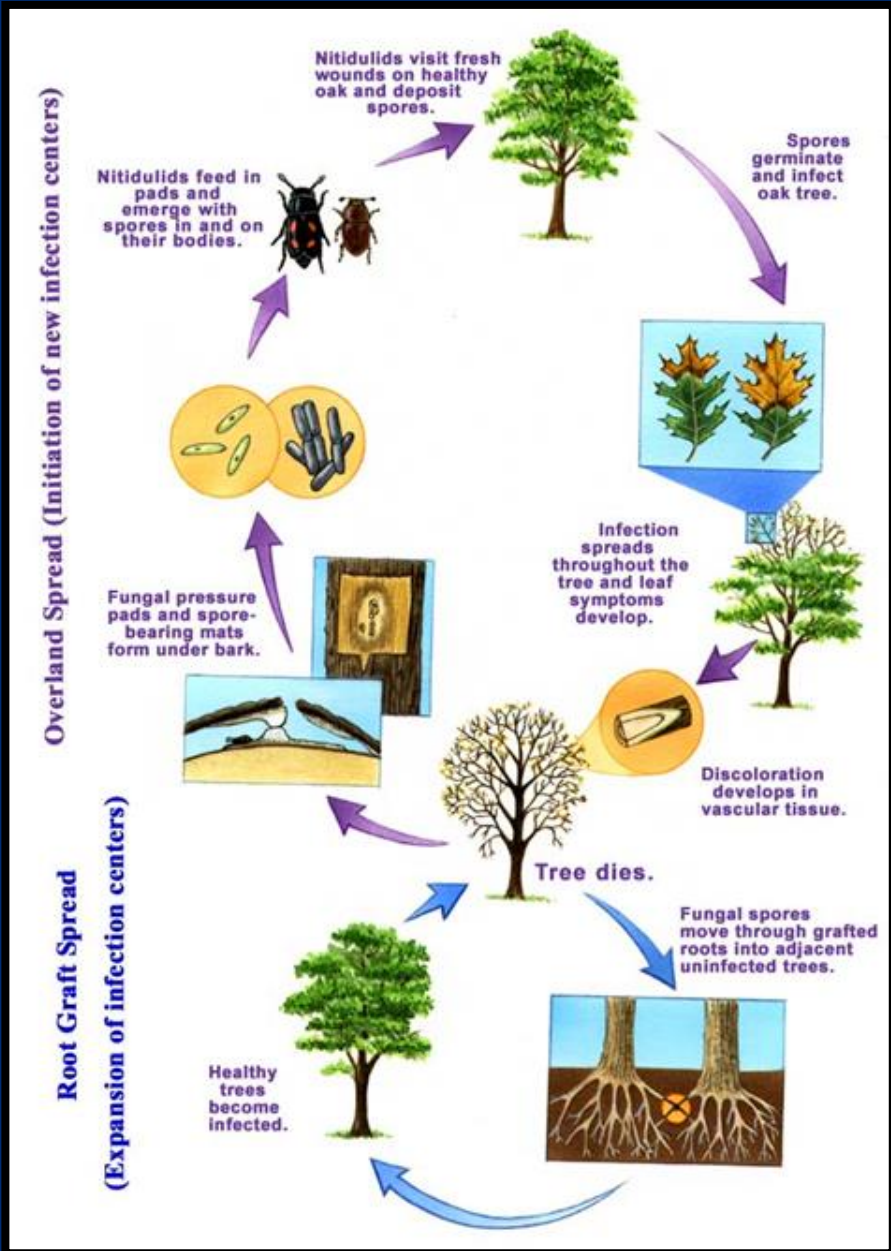
Joe Schuller 2005, Bugguide.com



Sam Houston 2010, Bugguide.com



Tom Murray 2010, Bugguide.com







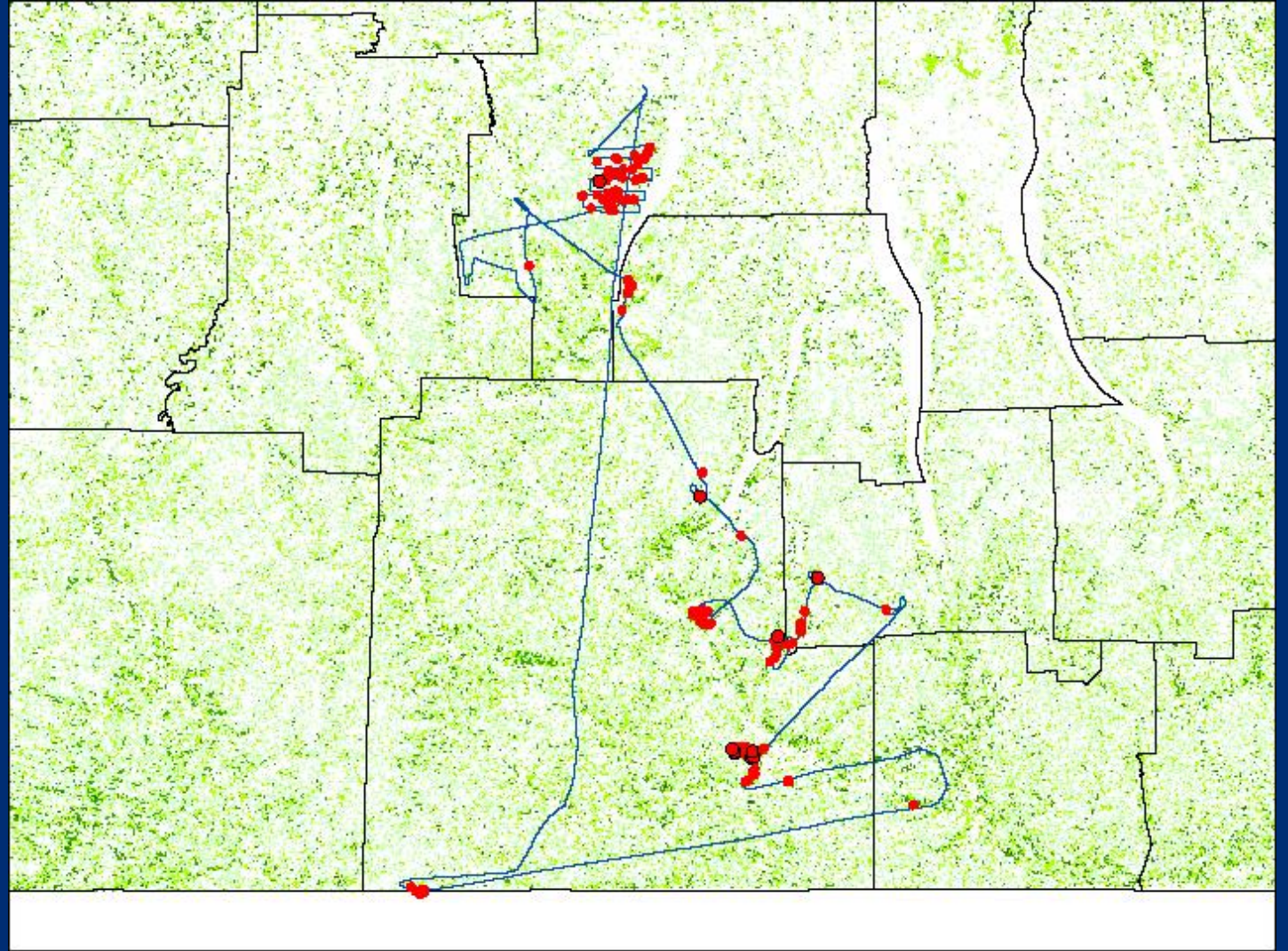
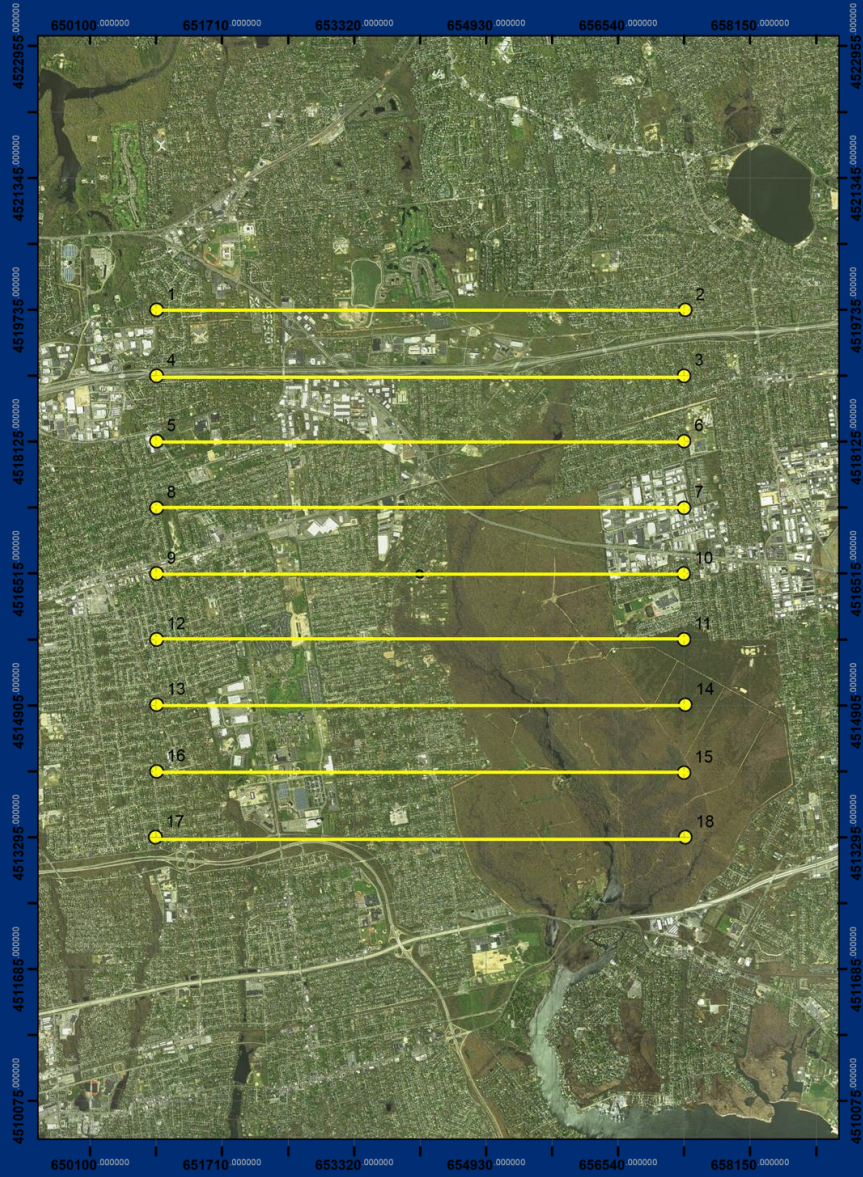


Department of  
Environmental  
Conservation





Department of  
Environmental  
Conservation









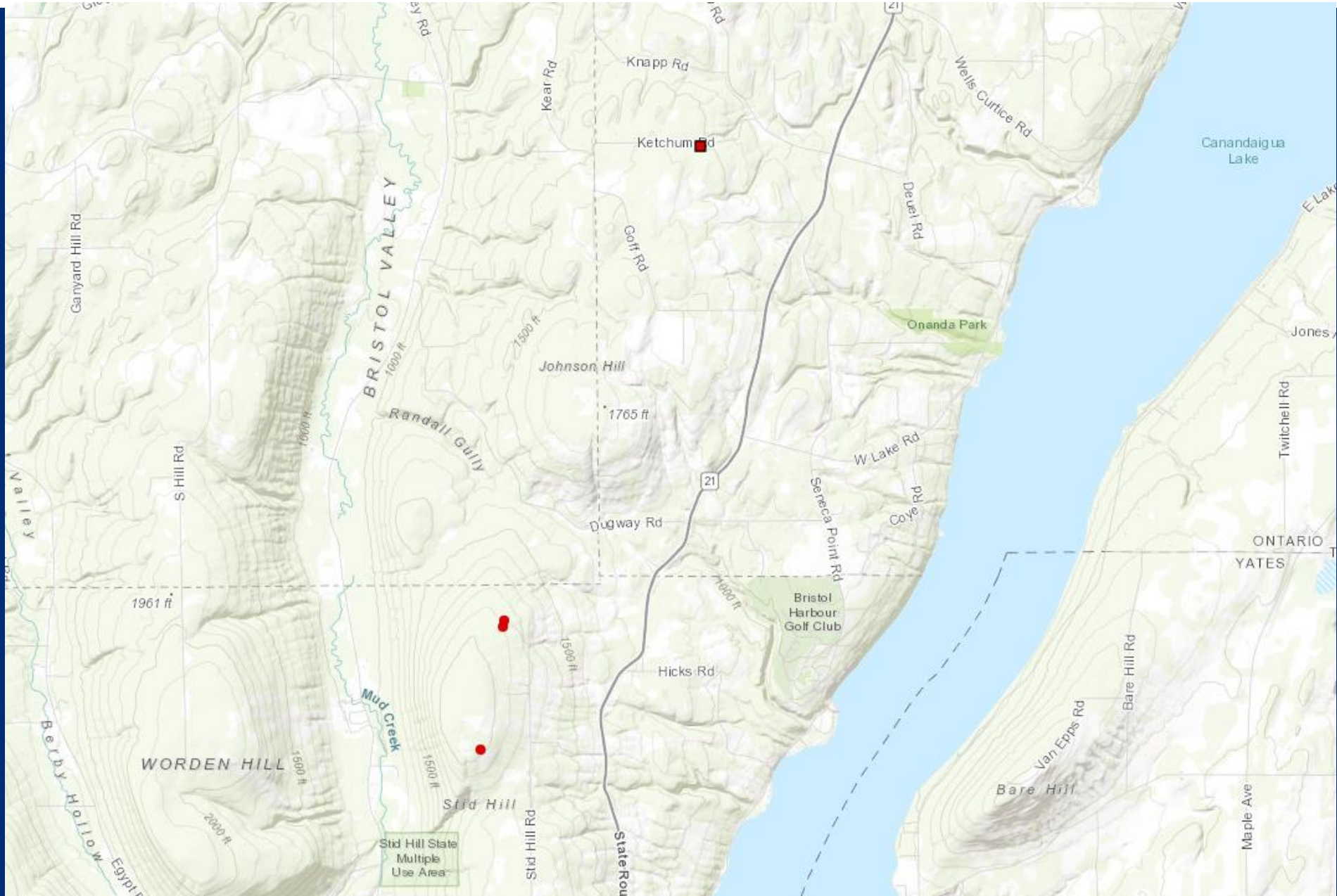






NEW YORK  
STATE OF  
OPPORTUNITY

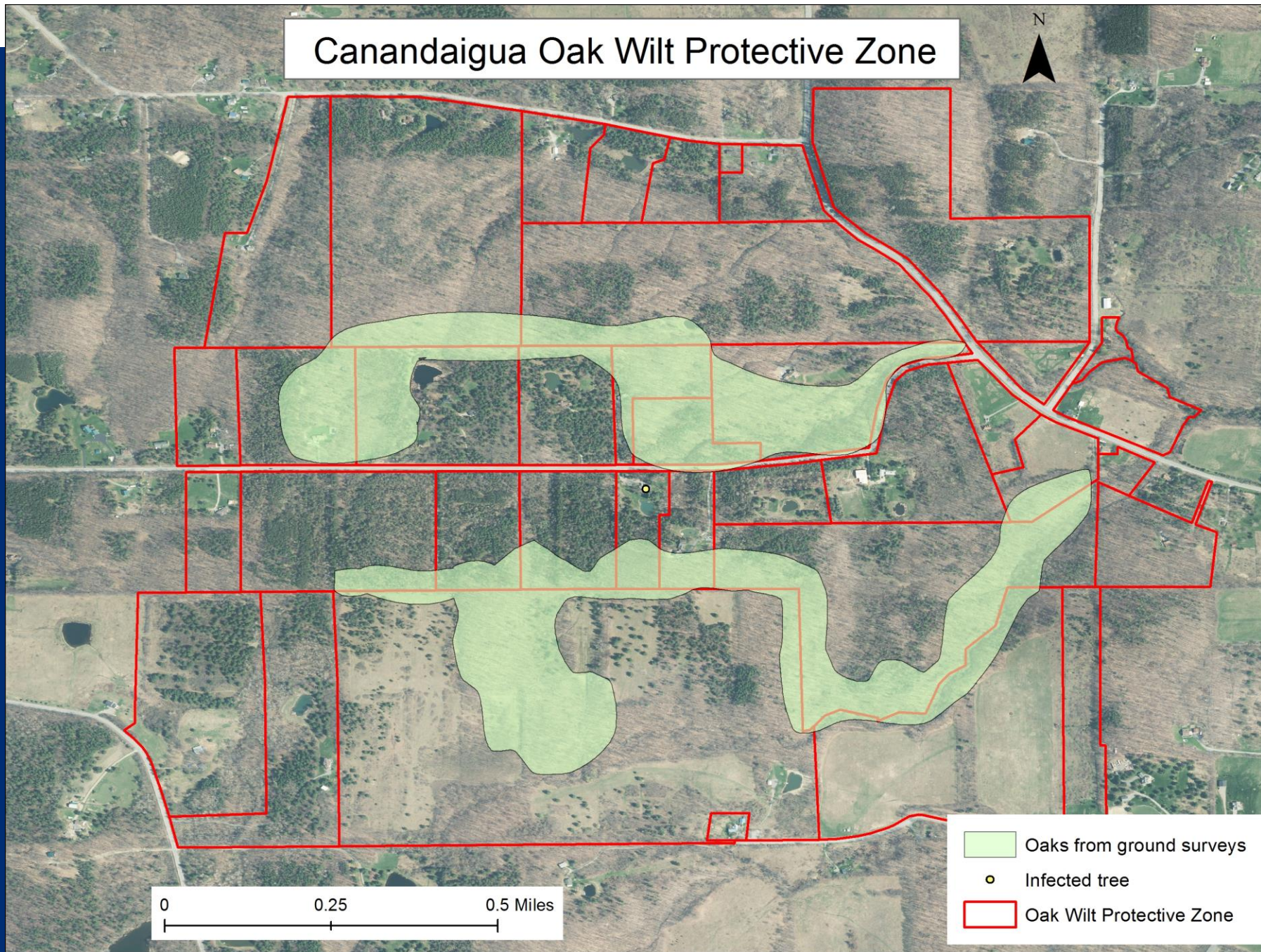
Department of  
Environmental  
Conservation

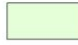




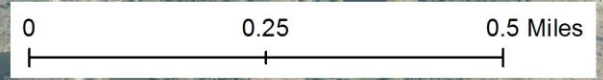


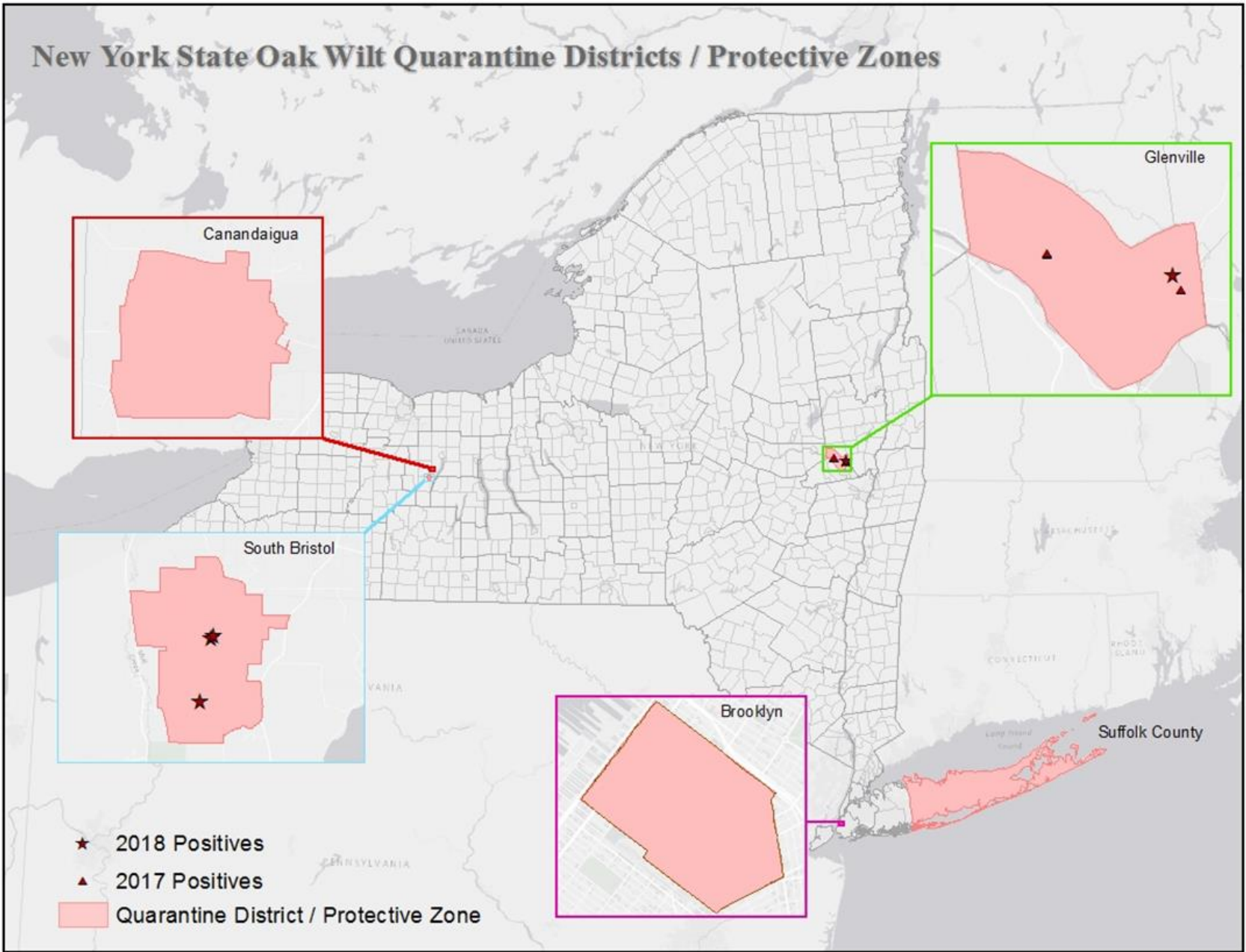


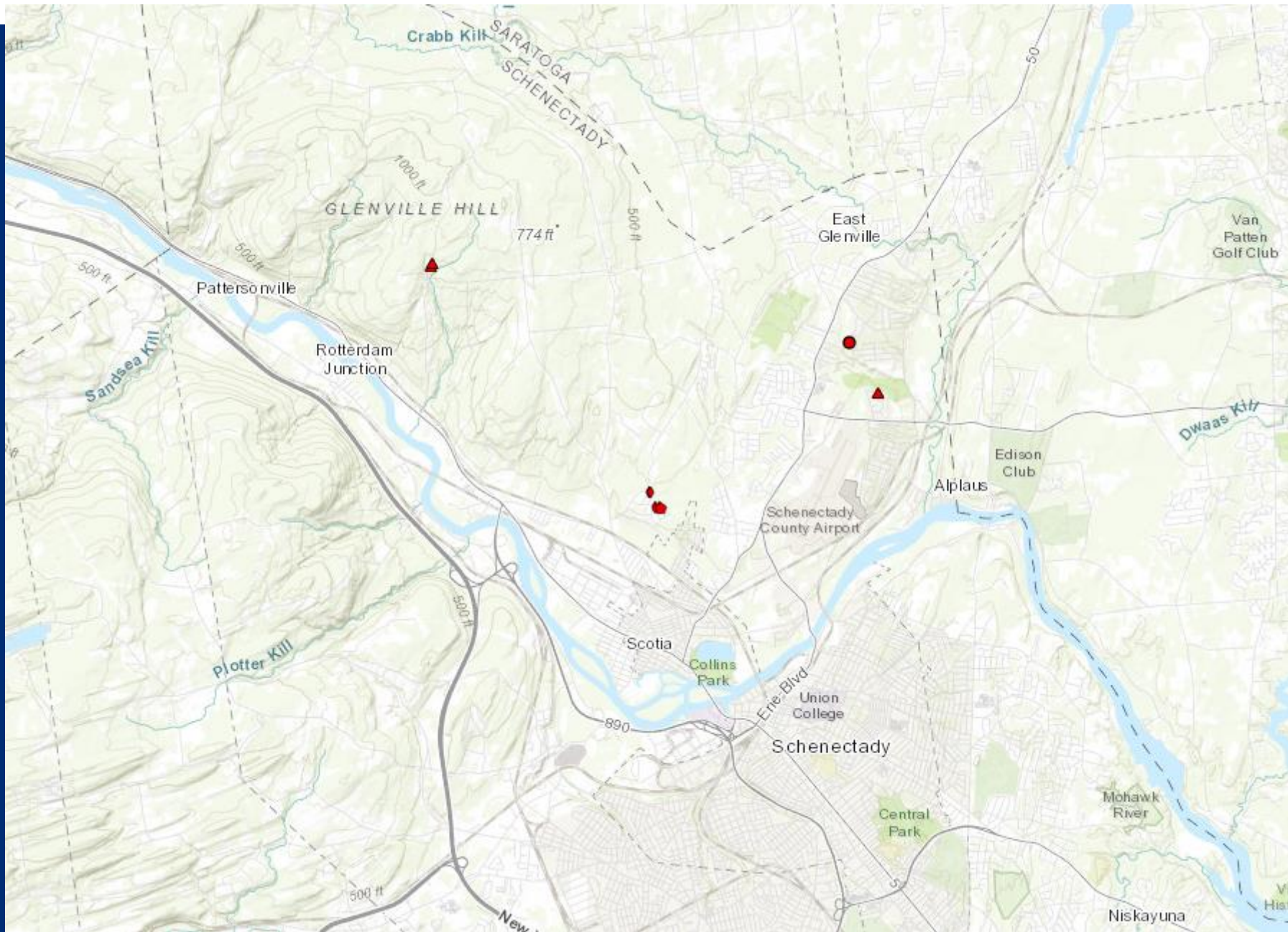
# Canandaigua Oak Wilt Protective Zone



-  Oaks from ground surveys
-  Infected tree
-  Oak Wilt Protective Zone











**PREVENT  
OAK WILT**

**DON'T  
PRUNE  
March-Sept**



Department of  
Environmental  
Conservation



# Firewood Movement



**USE LOCAL FIREWOOD**

**PROTECT TREES**

**Don't Spread Pests & Disease**

A graphic illustration featuring a stylized orange and yellow flame above two brown logs. A black beetle with long antennae is shown crawling on the logs. The background is a light beige color with faint silhouettes of trees.

NEW YORK STATE Department of Environmental Conservation



# Thank You

Division of Lands & Forests

Forest Health

625 Broadway, Albany NY

[foresthealth@dec.ny.gov](mailto:foresthealth@dec.ny.gov)

1-866-640-0652

[www.dec.ny.gov/lands/46919.html](http://www.dec.ny.gov/lands/46919.html)





Month	Risk	Pruning	Timbering	Firewood Movement
Apr-July	High	NOT recommended, immediately cover wounds with paint	NOT recommended, immediately cover wounds with paint	NOT permitted
Aug-Sept	Low	NOT recommended, immediately cover wounds with paint	Can be done, should still look to minimize oak wounding	Requires DEC permit
Oct-Mar	Very Low	Recommended, no need to cover wounds	Recommended	Requires DEC permit



