



Forest Health Update

City of Ottawa
Forestry Services



Emerald Ash Borer

- Discovered Ottawa 2008
- Tree injection (TreeAzin)
 - 1400 trees total (700 trees or 35,000cm per year)
- Dead ash tree removal ongoing as required
- Ash woodlot rehabilitation and management



Ash woodlot rehabilitation

Phase 1 - ash removal, buckthorn treatment and planting



Ash woodlot rehabilitation

Phase 1 – ash removal, buckthorn treatment and planting



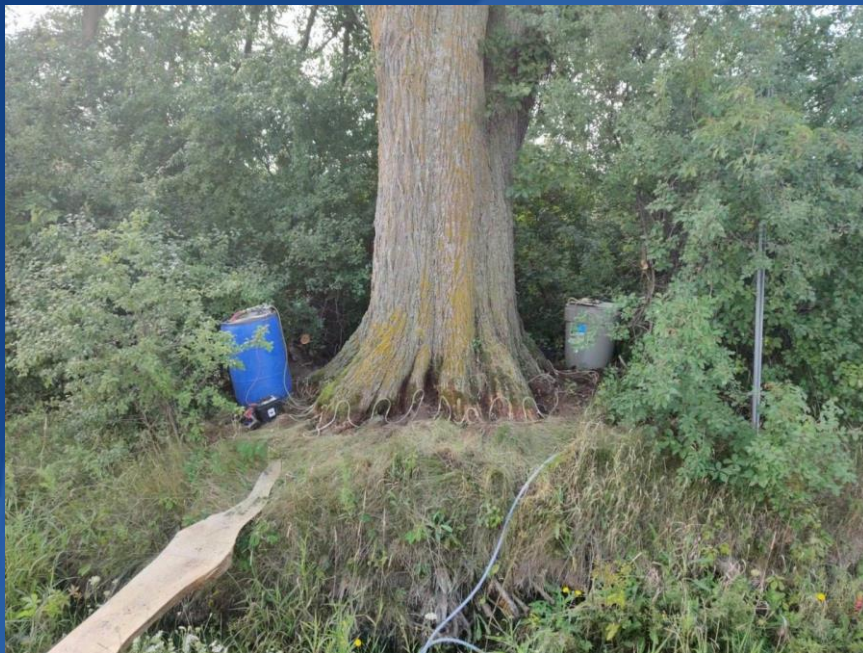
Ash woodlot rehabilitation

Phase 2 – monitoring, tending and planting



Dutch elm disease

- Tree injection (Arbotect)
 - Approx. 150 trees (2020)
 - 3 year injection cycle



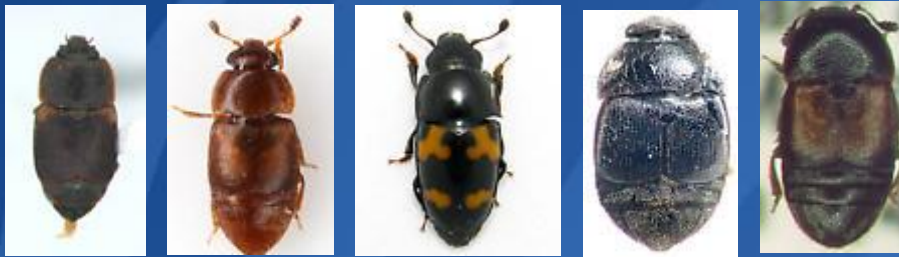
Gypsy Moth

- Calls from public (July and August)
- Media inquiries (July)
- Low to moderate localized defoliation
- Egg mass surveys January 2020
- Communication planning for spring



Oak wilt research

- Principal Researcher, Sharon Reed, OMNRF
 - Oak wounding
 - Beetle flight traps



Oak wounding

- Which beetle species attracted to oak?
- Timing of activity?



Nitidulid beetle flight traps

- Beetle flight timing related to temperature?



Questions?

Thank you