



Prescott 
Russell

Larose Forest: From Desert to Diverse Forest



History

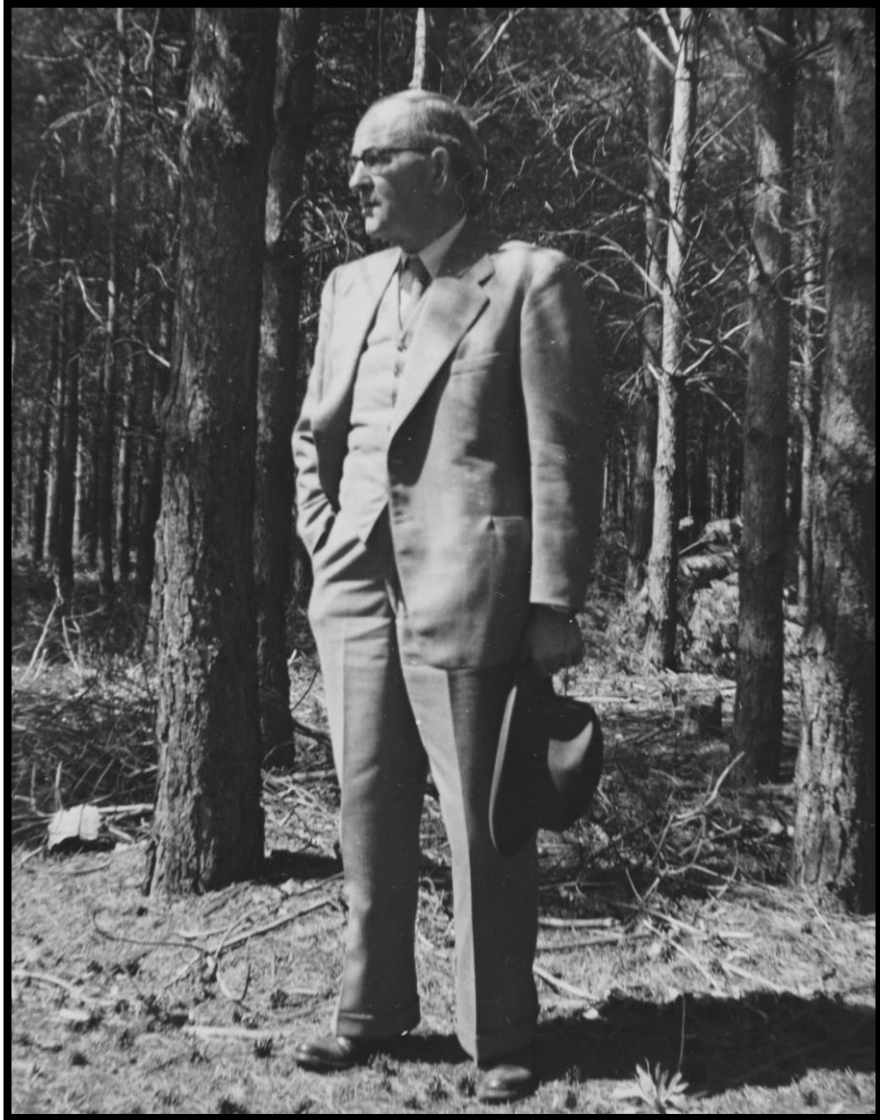
- Late 1700's – early colonization, fur trade
- Early 1800's – big spike in demand for naval timbers and masts



- Early 1900's

- Widespread land clearing and fires



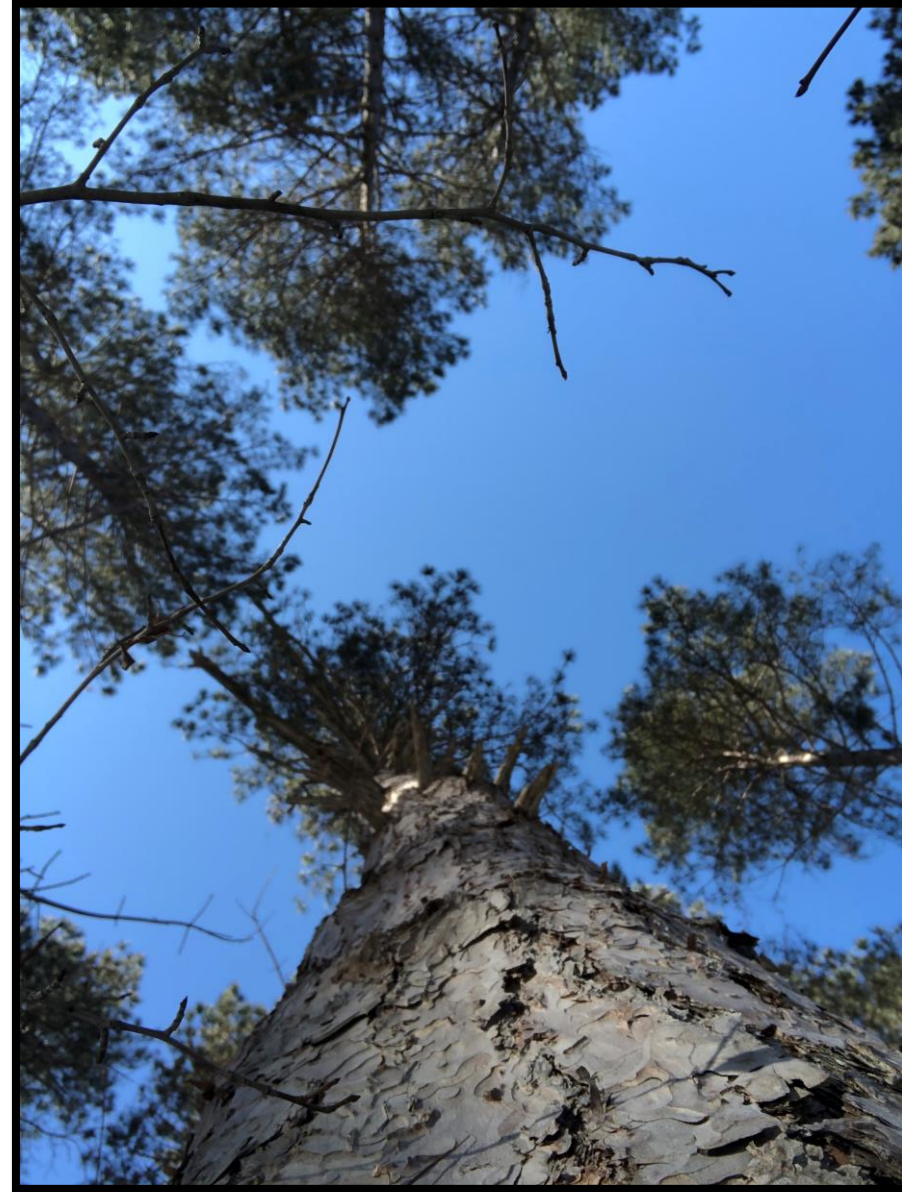


Ferdinand Larose

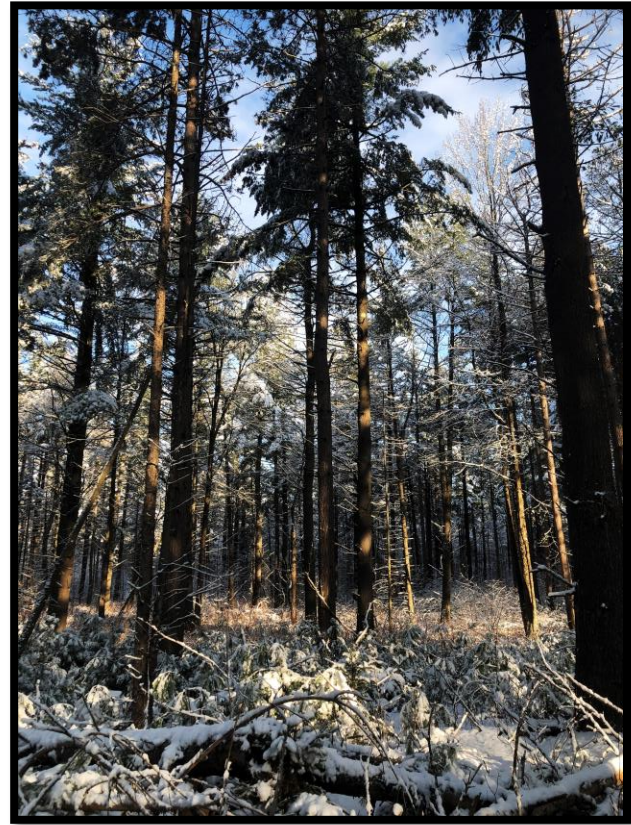
- County agronomist
- Stabilize soils
- Produce a “useful crop”

First Trees Planted in 1928





Cathedral Stand in 2020





- About 1/3 of landbase is wetlands, streams, ponds, riparian habitat
- Critical habitat for the majority of flora and fauna



Experts cataloguing their finds



Red maple, white pine, pin cherry, balsam fir under white pine



Red Oak



Hemlock, white pine and Scots pine under red pine



Fringed gentian



Painted trillium



Maidenhair fern



Feather moss



Common haircap



Sphagnum magellanicum



Spindle coral



Elfin saddle



Lemon drops



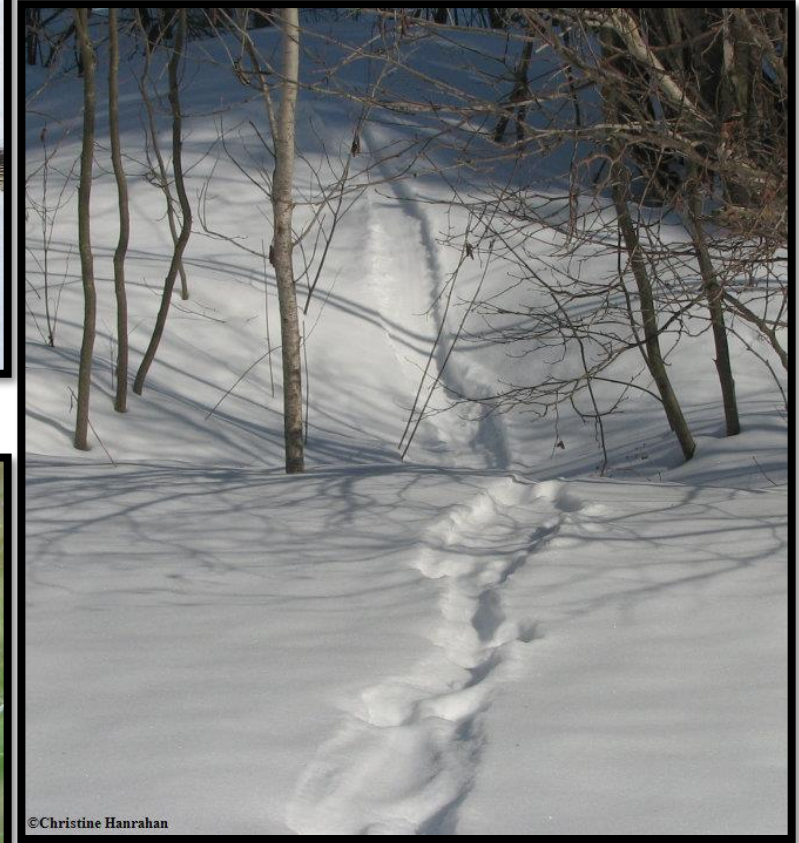
Frosted comma



Candleflame lichen



Mealy pixie cup



Eastern garter snake



Gray tree frog



Blue spotted salamander



Snapping turtle

Northern goshawk

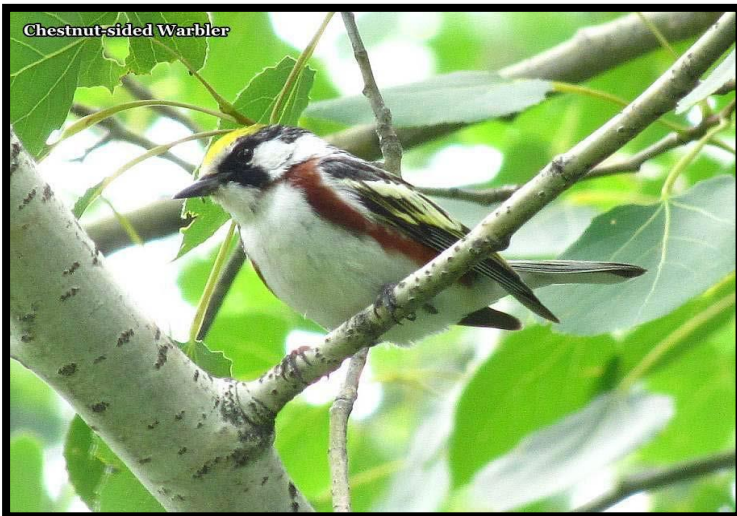


Photo credit: Ontario Tree Marking Course



Barred Owl





Chestnut-sided Warbler



Common Yellowthroat



Hermit Thrush



Cape May Warbler



Red-eyed Vireo

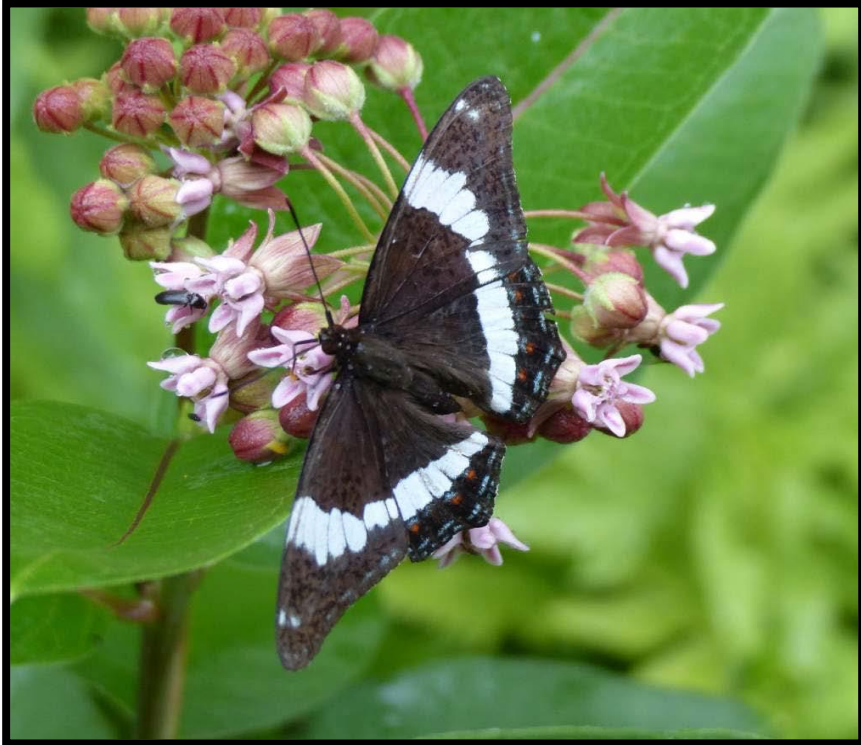
All photos by Christine Hanrahan

Marbled orb weaver



Ground crab spider





White Admiral



Evening primrose moth



Silver spotted skipper



Dogbane beetle



River jewelwing



Sweat bee

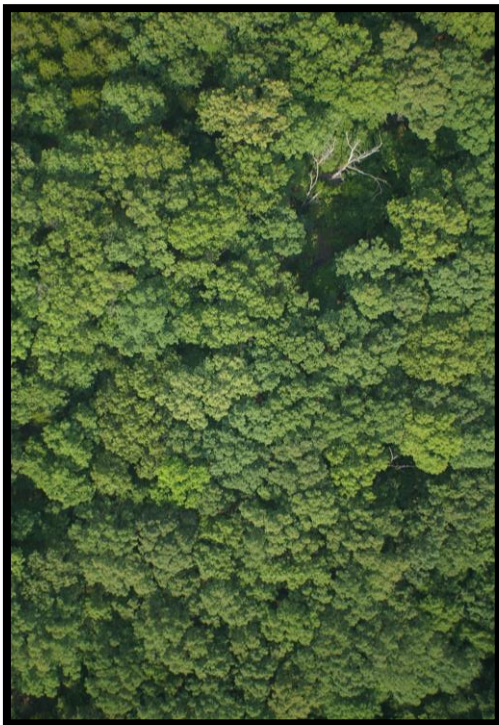
What can you do?



Know Your Forest



Emulate Natural Disturbances



Insects, disease,
lightning, age,
snow/ice



Low intensity ground fires



Severe storms, insect and
disease outbreaks

Practice Good Silviculture



Single-tree and group selection

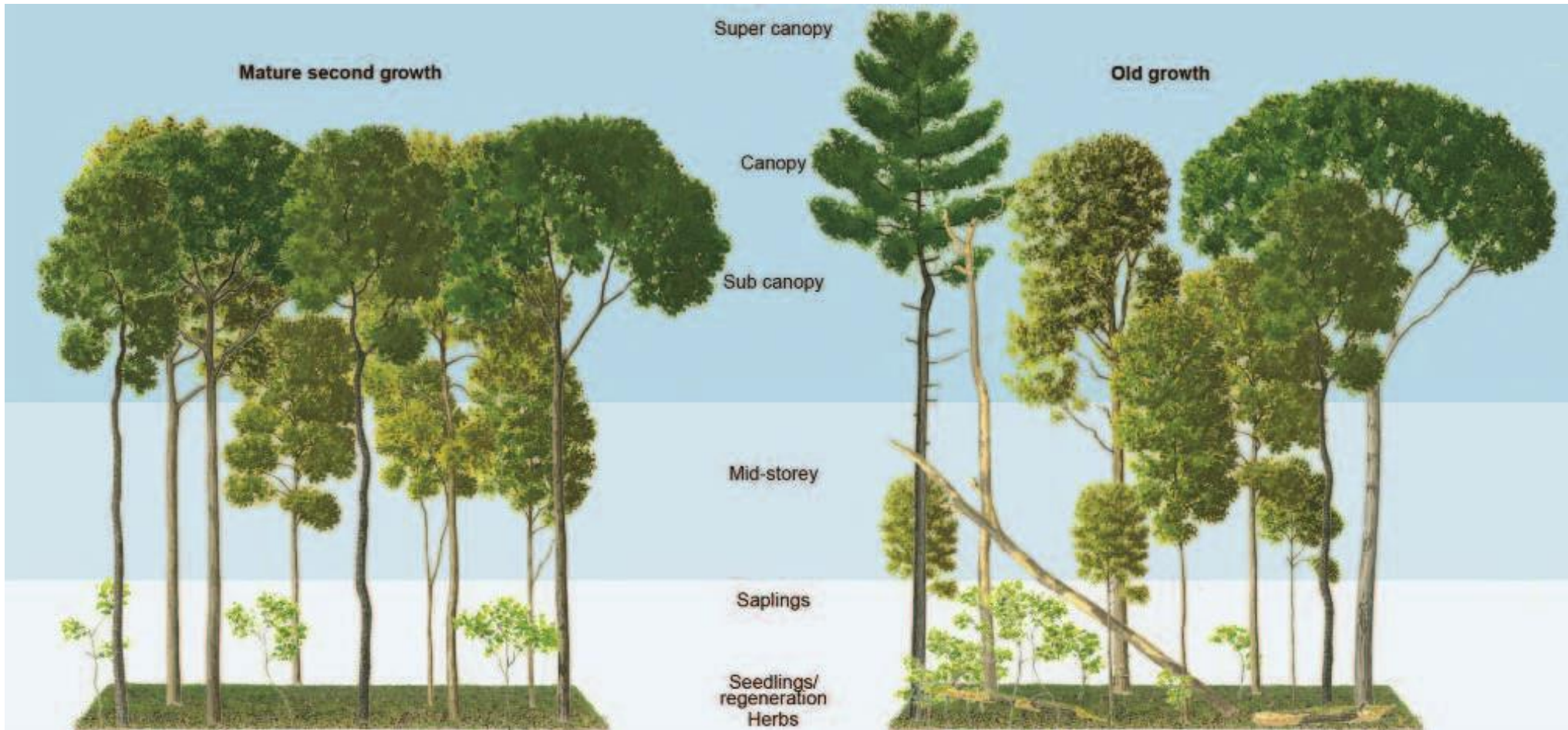


Uniform Shelterwood



Patch Clearcut

Enhance Structural Diversity



Protect Water



Streams



Ponds



Vernal pools

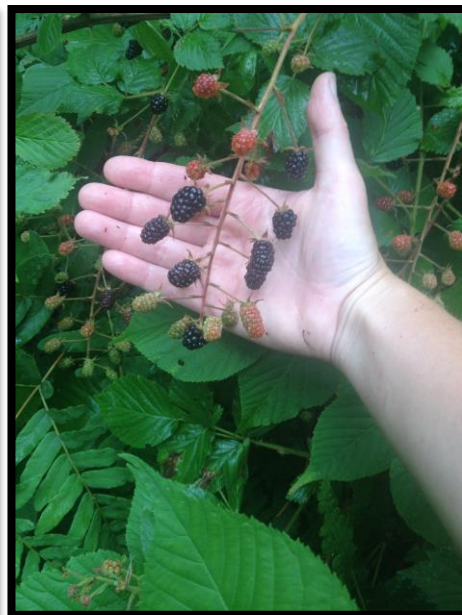
Critical habitat elements



Breeding



Food



Shelter

Cavities in Trees



Woodpecker nest cavity



Great horned owl



Northern flying squirrel

Mast Trees



Acorns



Beech Nuts



Cherry

Other Important Trees



Supercanopy



Solitary conifer



Roads and Trails



Forest Access Road



Ski Trail

Contactez-nous! – Contact Us!

URBANISME ET FORESTERIE PLANNING AND FORESTRY

Comtés unis de Prescott et Russell
United Counties of Prescott and Russell
59, rue Court St., C.P./P.O. Box 304
L'Orignal, ON K0B 1K0
613-675-4661 - 1 800-667-6307



www.prescott-russell.on.ca

Prescott 
Russell

Opportunités croissantes
Growing Opportunities