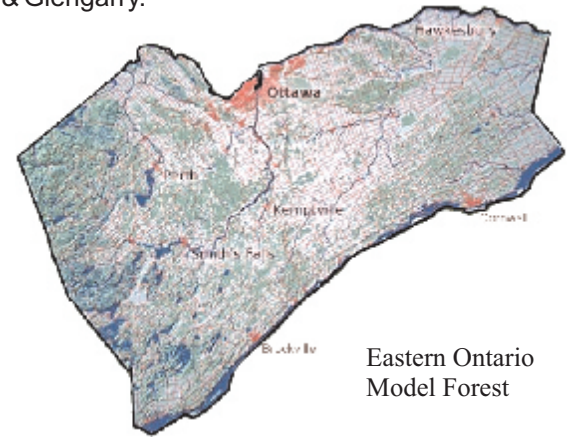


ATLAS

The Eastern Ontario Model Forest (EOMF) has initiated an atlas project for the reptiles and amphibians of eastern Ontario. Throughout 2009 and 2010, we are asking landowners, citizens, and visitors to submit simple records of sightings (or calls) within the model forest. Atlas reporting forms are available through the EOMF website. The EOMF includes all of the following five counties: Leeds & Grenville; Lanark; Prescott & Russell; Ottawa; and Stormont, Dundas & Glengarry.



Eastern Ontario Model Forest



Keep your cameras ready!

5) All submissions, for archival purposes, will become the property of the EOMF. Please keep your negatives or a copy of your digital images. Photographers retain all copyrights to their photos.

CONTEST RULES

- 1) Contest runs from April 1 to November 30 each year. Photos taken prior to 2009 are not eligible for prizes.
- 2) Two monthly prizes, a field guide and a calendar (for best picture and random draw respectively), will be awarded. Photos will only be eligible in the month they are received. All submissions will continue to be eligible for the grand prizes.
- 3) Monthly winners continue to be eligible for further monthly prizes, but must submit new photos. Resubmissions will not be accepted.
- 4) One grand prize (ACDSee Pro software) for the best photo will be awarded from all photos received before December 1. A second grand prize (wooden watch) will be awarded randomly to one photographer. The winner of the "best photo" grand prize will not be eligible for the random draw.

GRAND PRIZES



MONTHLY PRIZES

To encourage submissions, we are running a photo contest during each of the two years of the project. We want to stress, however, that any observation data you have will be a valuable addition to the atlas and should still be submitted even if its not within the timeframe of this contest.

GENERAL RULES

- 1) The contest is open to everyone.
- 2) Both digital images and prints will be accepted (see Submission Guidelines for further details).
- 3) Each image must originate from within the Eastern Ontario Model Forest and feature at least one reptile or amphibian as its subject.
- 4) We are not interested in photos of exotic or caged reptiles and amphibians, only native species found in the wild.

SUBMISSION GUIDELINES

- 1) Colour photos only. No black & white.
- 2) Images may be cropped, but should otherwise remain unedited.
- 3) All images/photos must be accompanied by an atlas submission (i.e., form). Please visit the EOMF website for more details. The following information must be included on each form:

GUIDELINES

- ~**WHAT?** Tell us the name of the species.
- ~**WHEN?** We need the date the photo was taken.
- ~**WHO?** We need your contact information (name, address, telephone #, email).
- ~**WHERE?** We need the exact location where the species was observed. Ideally this should be obtained from a GPS. If you don't have a GPS, you will be able to find the latitude and longitude of the location from a link in the online reporting form. At the very least, we require a detailed description of the location.
- 4) We also prefer that you submit your data electronically. For multiple submissions, an Excel template can be downloaded from our website. You can also use our online form or a printed card. To familiarize yourself with the data requirements, we highly recommend that you download and look over the data form before venturing into the field.



PHOTO CONTEST ON EASTERN ONTARIO REPTILES & AMPHIBIANS

Monthly prizes!



Open to all ages!